

# FALL FEST

*Live and Online*

## International Sale

Hosted by East Texas Simmental/Simbrah Association  
& The Heart of Texas Simmental/Simbrah Association.

**SEPTEMBER 14, 2024 @ 1 PM**

Bid Online at **BESTCATTLESALES.COM**

### **OFFERING:**

Fleckvieh Simmental  
Purebred Black and Red Simmental  
Purebred Simbrah • SimAngus  
Show heifers from both breeds.

### **SALE LOCATION:**

RUSK COUNTY YOUTH EXPO  
HENDERSON, TX  
3303 FM 13 W  
Henderson, TX 75654

**CATTLE AVAILABLE FOR VIEWING:** Saturday 9 AM. - 12 PM. • **Lunch:** 12 PM.

**CATALOG IS ONLINE AT**



*For more information  
or to request a catalog contact:*  
**Lou Langford: 214-801-2966**  
**Louis@commhard.com**

# Welcome

# FALL FEST ANNUAL PRODUCTION SALE

We would like to give our consignors a GREAT BIG THANK YOU, without them these sales would not be possible.

Both the ETSSA, which is the oldest area Association in Texas, and HOTSSA are steeped with a long-standing tradition of producing top quality cattle that will perform in any type of herd that a producer might have. Our Two Associations represent some 2000 head of cattle. This year we are turning the page in our thought process. This is our Inaugural year to HONOR a breeder that has stood the test of time and also through their hard work and diligence made an Impact on the breed and the cattle industry as a whole. This year's Honoree is Pine Ridge Ranch, Bill and Jane Travis. The Travis's have committed their lives to Improving the Simbrah breed as well as having an impact in the beef industry. Thank You Bill and Jane Travis for all that you have done and all that you continue to do.

## **HOSTED BY EAST TEXAS SIMMENTAL/SIMBRAH HEART OF TEXAS SIMMENTAL/ SIMBRAH ASSOCIATIONS**

### **SALE DAY NUMBERS**

Lou Langford: 214-801-2966

Keith Strack: 281-455-5896

Kenneth Airheart: 903-539-1666

Warren Garrett: 903-316-2889

### **AUCTIONEER**

Greg Clifton: 817-313-5250

### **HOTEL INFORMATION:**

Holiday Inn Express, 300 N Kilgore Drive,  
Henderson TX: 903-657-5250

Baymont Inn, 410 Hwy 79 South, Henderson, TX: 903-657-7900

**TERMS AND CONDITIONS:** All cattle sell under the suggested Terms and Conditions of the American Simmental Association and are available at [www.simmental.org](http://www.simmental.org).

**Texas is officially classified as free of Brucellosis and TB**

**LIABILITY:** All persons who attend the sale do so at their own risk. Neither the consignors nor the management assume liability legal or otherwise, for any accident that may occur.

Our Associations were founded on honesty and integrity so you, the buyer, can purchase with confidence. Our goal is to produce cattle that will go to work in your herd to help improve the great start you already have.

Our members and boards would like to Thank All of you for joining us for our Annual Sale. If you would like to become a member please don't hesitate to contact us. We would love to have you join us.

*Thank You,*

*Keith, Lou and Kenneth*

## **GUEST CONSIGNORS**

**PINE RIDGE RANCH - BILL AND JANE TRAVIS**

**POWELL SIMBRAH - ROBBY AND KIM POWELL**

**LA MUNECA CATTLE COMPANY**

**VICTOR GUERRA & SEALE SHOW CATTLE**

**LANGFORD'S SIMMENTALS - LOUIS LANGFORD**

**STARK CATTLE COMPANY**

**JUSTEN AND SHELBY STARK**

**STRACK FARMS - KEITH AND SHELLY STRACK**

**SIMMENTALS OF TEXAS**

**SCOTT RIDDLE & FRED SCHUETZE**

**4B SIMMENTALS - RONNIE & TWANA BROWN**

**J&L CATTLE SERVICES - JOE & LANNA HENSGENS**

**HUBNIK FARMS - LOUIS HUBNIK**

**MOSER CATTLE - RUSS & WANDA MOSER**

**K5 RAFTER TOP SIMMENTALS**

**KENNETH & RHONDA AIRHEART**

# Show Heifer Lots



## 1 KRP GRACIE

TATTOO: 8M | ASA#: 4384552 | DOB: 3/2/2024 | P | POWELL, ROBBY

**SIRE** MCFERRANS BANDIT 219K #4132189 { MCFERRANS BANDIT 8015F  
PMTM ECS RUTH 861F

**DAM** SLIM RED #4297508 {

**BW: 75 | 205 WT: 0 | 1/2 SM 1/2 AR |**

CE	12.1
BW	-1
WW	67.2
YW	100
MCE	5.7
MILK	23.2
MWW	56.8
API	122.1
TI	73.8

Gracie is the result of a new opportunity we decided to take when we bought 15 Angus and Red Angus heifers. She is one of the first born from our black Simmental herd sire and a Red Angus heifer. She is clean fronted with a big middle. This pretty heifer will be halter broke on sale day. Don't miss this opportunity for new genetics that will take your herd to new levels.



## 2 KRP GLORY

TATTOO: 20M | ASA#: 4384564 | DOB: 3/2/2024 | P | POWELL, ROBBY

**SIRE** RP-BCR INSIGHT G302 #3797367 { PVF INSIGHT 0129  
RP/MP BUILT TO LOVE A021

**DAM** CMFM GLORY K009 #4048041 { YARDLEY HIGH REGARD W242  
WLE GLORYT49

**BW: 69 | 205 WT: 0 | 3/4 SM 1/4 AN |**

CE	11.7
BW	1.1
WW	71.3
YW	108
MCE	4.9
MILK	21.7
MWW	57.3
API	116.3
TI	69.4

Glory is a 3/4 Simmental and 1/4 Angus, black polled Simangus heifer. We bought her dam bred last fall in the Red River Farm Production sale. And everyone knows what great quality they have! KRP GLORY will be halter broke on sale day. She should make a great show heifer and super future brood cow for somebody. She is very pretty fronted and has a nice big middle. A great combination of pretty and powerful. Don't miss out on this one on sale day.



## 3 KRP ANNABELLE

TATTOO: 19M | ASA#: 4384563 | DOB: 4/9/2024 | P | POWELL, ROBBY

**SIRE** POWELL'S BUBBA #3923655 { SWR BLACK WAGON  
POWELL'S DANDELION 19C

**DAM** POWELL'S ANNIE #3597850 { A&A BLACK SCEPTER K110  
SMITH HAGAN SADIE 13C

**BW: 69 | 205 WT: 0 | 5/8 SM 3/8 BR |**

CE	10.1
BW	2.5
WW	66.2
YW	93.4
MCE	6.8
MILK	17.9
MWW	50.9
API	83.1
TI	60.3

Annabelle is a Purebred Black Simbrah Heifer out of one of the best cows we have ever raised. . Black polled purebred that is really good. She will not be weaned by sale day. Her dam will be with her on sale day. She will only be 5 months old. If you purchase her, you may take her that day or we will gladly take her back home and finish halter breaking her and wean her in about a month. If you do decide to not take her with you on sale day you will be able to pick her up at the ranch in Como, Texas. Don't miss this rare opportunity for a special female.

# Show Heifer Lots



## 4 JLCS IVANKA MF 414

TATTOO: 414 | ASA#: PENDING | DOB: 02/09/2024 | J&L CATTLE SERVICES |

**SIRE** +DF MR BUTTERBEAN 366/4 { +SRS MR. TROUBADOR 933  
#ABBA 927044 { +JDH LADY MIFFANY MANSO 447/4

**DAM** JLCS BLACK BETTY F414 { SMITH STOUT N BLACK  
#3422584 { SMITH BOLD LADY 414C

**BW:** | **205 WT:** |

% Simbrah; 3/8 Simmental, 5/8 Brahman  
JLCS Ivanka MF414 is brings FRESH and NEW genetics to the Simbrah breed! Ivanka is sired by the popular Brahman bull, +DF Mr Butterbean 366/4, who is the 2016 ABBA National Grand Champion Red Brahman Bull and 2016-2017 Red Show bull of the year! If you study his calves it is without a doubt he will make them stout and packed with muscle. Ivanka's dam JLCS Black Betty F414 is also a female that has been a top producing

CE	
BW	
WW	
YW	
MCE	
MILK	
MWW	
API	
TI	

cow for us in our cowherd and has taken many backdrop pictures for our family! Black Betty is sired by Smith Stout N Black and her dam, Smith Bold Lady, traces back to LM She Moves cow family and the old school 6GLM Knockout 3J-400. She too sells in this sale. Be assured, you are investing into the heart of our herd with these 2 females! Ivanka carries many of her dam and sire's physical traits by being big footed, big belly, level hip and sound at the ground. She is also super feminine and clean made. Ivanka is very docile and could potentially make a great show heifer! Here is your chance to pick your favorite Simmental bull and make your own PUREBRED Simbrah!



## 5 JLCS GABBANA MF11

TATTOO: MF11 | ASA#: PENDING | DOB: 03/06/2024 | J&L CATTLE SERVICES |

**SIRE** GCC TIMBERLAND 139J { JSUL SOMETHING ABOUT MARY 8421  
#4022437 { JS BLACK SATIN 9B

**DAM** JLCS MS DOLCE F11 { LMC LF MAKING DREAMS  
#3624204 { CT LADY 380 RHINEAUX

**BW:** | **205 WT:** |

Purebred Simbrah  
We love the Simbrah breed and we believe in injecting FRESH genetics into our Simbrah cowherd. JLCS Gabbana MF11 is a great example of some of our very own FRESH genetics! MF11's mother is one of our foundation Simbrah females, JLCS MS DOLCE F11 who is an own daughter of the 2015 International Reserve Champion Red Brahman Female, CT Lady 380. Lady 380's pedigree is Brahman royalty as she is a direct mating

CE	7.5
BW	3.5
WW	74.3
YW	109.2
MCE	2.7
MILK	17.9
MWW	54.9
API	82.4
TI	62.4

of the #1 Register of Renown female in the ABBA, CT Lady Rhineaux Ray 8/9 and the #1 Lifetime Sire ABBA Register of Renown, +Mr V8 380/6. JLCS Ms Dolce F11 sire, LMC LF Making Dreams, is a bull we purchased from La Muneca to be a true seedstock bull for our operation. Making Dreams is sired by one of the top ranking Simmental carcass bull's, WS Beef Maker R13 and out of none other than the infamous LMC WFC Ms. Dream Girl who needs to introduction to anyone in the Simbrah world! JLCS Gabbana MF11's dam, F11, is one of our ground breaking donors! Gabbana is sired by the purebred Simmental bull, GCC TIMBERLAND 139J, who is a son of JSUL SOMETHING ABOUT MARY 8421 and JS Black Satin 9B. This mating makes him a flush mate to the 2022 NWSS Champion Simmental bull GCC Bold Move. Gabbana is a dual-purpose heifer who can be used to produce show cattle or seed-stock! Her mother is fertile and easy keeping, we have full confidence Gabbana will also follow in those footsteps! Don't miss out to be on the forefront of new Simbrah genetics to elevate your program!



## 6 POWELLS` SAMSON

TATTOO: 14K | ASA#: 4142860 | DOB: 4/12/2022 | P | POWELL, ROBBY

**SIRE** SWR BLACK LIGHT  
#3431471

BCC POWER BROKER  
SWR BLACK ULTRA DICE

**DAM** SMITH HAGAN SADIE 13C  
#3003336

SMITH STOUT N BLACK  
HAGAN SMITH SHOW STOPPER

BW: 80 | 205 WT: 0 | 5/8 SM 3/8 BR |

Samson is a black polled Purebred Simbrah bull. He is a virgin bull as well. Ready to go to work immediately. He has been strictly on grass pasture. He should stay in good flesh while breeding cows. Samson is one of the few offspring we have ever sold out of his dam. We have retained all of her heifer offspring in our herd. Unique opportunity to purchase these genetics.

CE	11.4
BW	1
WW	61.8
YW	86.7
MCE	6.8
MILK	17
MWW	47.8
API	101.7
TI	62.6



## 7 RTOP SIR BLAZE 0413L

TATTOO: 0413L | ASA#: 4294852 | DOB: 4/13/2023 | P | K5 RAFTER TOP SIMMENTALS

**SIRE** T5 FRENCH REVOLUTION  
#3573183

BAR 5 P SA EVOLUTION418S  
CRIMSON MISS LADY KEONA

**DAM** T5 RIVER CREEK BABS  
#3225225

BHR ORANGE RIVER G558E  
LCF BABS 286U

BW: 95 | 205 WT: 0 | FB SM |

RTOP Sir Blaze 0413L is a tremendous T5 French Revolution son. His pedigree is packed with some of the most proven South African Fleckvieh genetics. If you take the time to explode the pedigree you will see that Fred Schuetze's hand was very instrumental in the creation of Blaze. His Dam, T5 River Creek Babs, an own daughter of BHR Orange River, is a calf making machine. Blaze has an excellent temperament, walks on sound feet and legs and will make an impact in your herd.

CE	4.5
BW	5.7
WW	76.9
YW	105
MCE	1.3
MILK	34
MWW	72.4
API	85.8
TI	63

# Open Heifers Lots



## 8 RWM SOPHIA 503L

TATTOO: 503L | ASA#: 4231979 | DOB: 1/7/2023 | P | MOSER, RUSSELL

**SIRE** PRR PRINCIPAL 607D  
#3292240

{ PRR PREVIEW 973Z  
PRR NINA 396X

**DAM** RILEY'S PINTO  
#2639937

{ PRR BLACK PACE 745R  
BOSQUE HOPE P11

**BW: 63 | 205 WT: 0 | 5/8 SM 3/8 BR |**

RWM Sophia sired by PRR Principal 607D, is a beautiful blazed face heifer with a gentle disposition. She is open and ready to breed! 2 Units of PRR Alamo 690Y semen will be included with purchase. Semen is stored at Champion Genetics Canton, TX.

CE	10.1
BW	0.4
WW	50.5
YW	68.4
MCE	5.4
MILK	20.7
MWW	45.9
API	101.6
TI	56.7



## 9 RWM PEACHES 504L

TATTOO: 504L | ASA#: 4231975 | DOB: 4/10/2023 | P | MOSER, RUSSELL

**SIRE** PRR IMPACT 77H  
#3792088

{ PRR RAMBLER 686D  
PRR UNANIMOUS FAVOR 04F

**DAM** RWM LOVELY  
#3656867

{ PRR PRINCIPAL 607D  
RWM RILEY'S STAR

**BW: 70 | 205 WT: 0 | 5/8 SM 3/8 BR |**

Sired by PRR Impact 77H, RWM Peaches is an outstanding open heifer with the sweetest disposition. She is ready to breed! Buyer will receive 2 units of calving ease sire PRR Alamo 690Y semen. The semen is stored at Champion Genetics Canton, TX.

CE	9.6
BW	2.6
WW	61.4
YW	83.4
MCE	5
MILK	15.2
MWW	45.8
API	83.3
TI	52.8



## 10 HONEYBUN

TATTOO: | ASA#: | DOB: | |

**SIRE** PRR PRINCIPAL 607D  
#3292240

{ PRR PREVIEW 973Z  
PRR NINA 396X

**DAM** HENSBROS MS H65  
#3911393

{ SMITH BELLA XTRA STRETCH  
RED COLLETTE 65D

**BW: | 205 WT: |**

Honey Bun, sired by PRR Principal 607D is a beautiful open heifer who is ready to breed! Her pedigree taps into a fantastic well of genetics. Buyer will receive 2 units of calving ease sire PRR Alamo 690Y semen. The semen is stored at Champion Genetics Canton, TX.

CE	8.8
BW	1.8
WW	61.7
YW	79.5
MCE	4.9
MILK	17.3
MWW	48.1
API	88.7
TI	57.5

# Pen of 4 Open Heifers



**11 4B 75L**  
 TATTOO: 75L | ASA#: 4316228 | DOB: 05/23/2023 | P | 4B SIMMENTAL

<b>SIRE</b>	BAR E MR COWBOY 171H	{	BJF THE RIGHT RED 8021F	CE	8.3
	#4233459		93CH MS SAKIC 5534		BW
<b>DAM</b>	4B 66H	{	SSCH KEME FORTUNE	WW	66.1
	#3866328		RTOP MS HILDE 0128Z		YW

**BW:** | 205 WT: | 1/2 SM 1/2 AR |

MCE	5.5
MILK	27.5
MWW	60.5
API	104.0
TI	66.0

**11 4B 79L**  
 TATTOO: 79L | ASA#: 4316226 | DOB: 06/12/2023 | P | 4B SIMMENTAL

<b>SIRE</b>	BAR E MR COWBOY 171H	{	BJF THE RIGHT RED 8021F	CE	7.6
	#4233459		93CH MS SAKIC 5534		BW
<b>DAM</b>	4B 11H	{	4B MR LOCKDOWN 96E	WW	71.5
	#3853849		4B LOLLIPOP 120E		YW

**BW:** | 205 WT: | 3/8 SM 1/2 AR 1/8 AN |

MCE	4.6
MILK	20.7
MWW	56.4
API	108.1
TI	68.7

**11 4B 91L**  
 TATTOO: 91L | ASA#: 4316230 | DOB: 07/26/2023 | P | 4B SIMMENTAL

<b>SIRE</b>	BAR E MR COWBOY 171H	{	BJF THE RIGHT RED 8021F	CE	8.2
	#4233459		93CH MS SAKIC 5534		BW
<b>DAM</b>	90J	{	4B UPLOADED 108E	WW	77.0
	#4034304		BHR GIAVANA G318		YW

**BW:** | 205 WT: | 1/2 SM 1/2 AR |

MCE	4.2
MILK	25.9
MWW	64.3
API	103.1
TI	70.1

**11 4B 96L**  
 TATTOO: 96L | ASA#: 4384591 | DOB: 08/15/2023 | P | 4B SIMMENTAL

<b>SIRE</b>	BROWN PRESIDENT H474	{	LSF SRR PRESIDENT 8177F	CE	8.8
	#4233451		BROWN MS INDEPENDENCE E899		BW
<b>DAM</b>	4B ASPEN 88C	{	SSCH KEME FORTUNE	WW	73.0
	#3092850		4B PEACOCK 51A		YW

**BW:** | 205 WT: | 1/2 SM 1/2 AR |

MCE	5.9
MILK	30.5
MWW	66.9
API	126.5
TI	77.8

This set of 4 power house percentage Simmental females are Sired by 2 different Red Angus bulls. Bar E Mr. Cowboy and Brown President. Their Dam's are Fleckvieh or Fleckvieh influenced. This cross works extremely well, getting the best of both breeds. Moderation of frame, maternal characteristics and power. These girls will be ready to breed in December for a Fall 2025 calf.

# Bred Heifer Lots



## 12 JLCS BLACK BETTY F414

TATTOO: F414 | ASA#: 3422584 | DOB: 2/12/2018 | P | J&L CATTLE SERVICES

**SIRE** SMITH STOUT N BLACK  
#2692757

CNS DREAM ON L186  
TRIPLE C SHES AMAZING

**DAM** SMITH BOLD LADY 414C  
#3136524

SMITH MOVING ON  
6G MS POWERPLANT 5P/414

**BW: 60 | 205 WT: 0 | 3/4 SM 1/4 BR |**

It's hard to pass up on one like this!! My wife is not happy about us selling this one, but we want to offer our best and here she is! Black Betty was one of our most successful show heifers. She made her way to the back drop many times clinching titles such as: 2019 National % Simbrah Reserve Junior division, 2019 Southwest District Livestock Grand Champion AOB heifer and 2018 LSSA Bayou Classic Grand Champion % Simbrah heifer. Black Betty also has a great track record in production raising a

CE	14.6
BW	2.7
WW	66.3
YW	93
MCE	8.8
MILK	16.1
MWW	49.1
API	99.4
TI	61.8

show calf prospect every year. She is a very easy keeping, good udder and fertile female! We have AI'd this female multiple times and she takes every time! Black Betty is a 3/4 Simmental 1/4 Brahman that carries a pedigree that is second to none! Her dam is one of our cornerstone Simbrah females, Smith Bold Lady 414C. At 9 years of age 414C looks like a cow that is just hitting her prime in production. You have to appreciate the power, longevity, and look she possesses. Her sire is Smith Stout N Black, a purebred Simmental bull that has made his mark at Smith Genetics. Buy with confidence on this proven female! F414 sells exposed to one of our up and coming herd sires, TBR TRANSFORMER K101. K101 is a homozygous black and homozygous polled LMC MT Transformer 5E/32 son.



## 13 LMC/JSSC ABIGAIL 5K/207

TATTOO: 5K/207 | ASA#: 4194374 | DOB: 11/12/2022 | P | LA MUNECA CATTLE CO & SEALE SHOW CATTLE

**SIRE** RGV DRC PAYING THE BILLS  
#3614882

LLSF PAYS TO BELIEVE ZU194  
RGV LMC DR. BEAUTY X076

**DAM** LMC DAYDREAM 5Z/173  
#2694109

LMC RHINO 5W/367  
LMC WFC MS. DREAM GIRL

**BW: 75 | 205 WT: 0 | 5/8 SM 3/8 BR |**

What an opportunity here to get in on a full sister to the many times champions LMC/JSSC Augusta and LMC/JSSC Darling Annabelle that Nolan Seale and Jenna Tyler led to multiple championships this past season including Supreme Champion Junior Female at the Cattleman's Congress, Grand Champion at the Fort Worth Junior Show, back to back Grand Champion titles at the American Junior Simbrah Roundup and Grand Champion at the State Fair of Texas Open Show among numerous others. Abigail is sired by the successful RGV DRC Paying the Bills bull and out of the productive LMC Daydream donor that we feel is one of the most proven cows in the breed. Abigail has the pedigree clout to elevate your program and will sell exposed to multiple sires including LMC BBS Rambler and RGV/LMC The Specialist. DON'T MISS THIS DONOR PROSPECT!

CE	8.6
BW	2.8
WW	68.1
YW	98.9
MCE	5.2
MILK	15.5
MWW	49.5
API	80.6
TI	58.3



## 14 3LSR LAST DANCE

TATTOO: K1031 | ASA#: 4207327 | DOB: 10/31/2022 | P | LANGFORD'S SIMMENTALS

**SIRE** CNS DREAM ON L186  
#2144976

NICHOLS LEGACY G151  
CNS SHEEZA DREAM K107W

**DAM** 3LSR BERTHAS BLACK NITRO  
#2429757

WAR NITRO  
3LSR BERTHA

**BW: 78 | 205 WT: 674 | PB SM |**

3LSR LAST DANCE is not just another black cow. If you look at her pedigree you can see she is a 4th generation AI animal. Starting with BOZ Wrangler, next NLC GOOD A NUFF, next War Nitro, finally Last Dance's sire, CNS Dream On, one of the best sires ever in the breed. Last Dance is clean in the front, wide in the back end and filled with power and meat in the middle, combined with a don't care if the sun comes up attitude. She is bred to the up and comer, T5 Texas Raptor, an impeccable, homo polled, non dilutor, solid pattern, full blood, full Fleck bull. This mating should make an amazing calf.

CE	12.9
BW	2.8
WW	74.3
YW	104.8
MCE	6.7
MILK	17.4
MWW	54.5
API	119.1
TI	70.7





## 15 PRR KAYLANI 16K

TATTOO: 16K | ASA#: 4095442 | DOB: 1/31/2022 | P | PINE RIDGE RANCH LLC

**SIRE** PRR ACHILLES 285A  
#2851904

{ BHR KALAHARI G556E  
PRR AMARODEO 455U

**DAM** PRR RED VELVET 01E  
#3361336

{ PRR ALAMO 690Y  
PRR FAHIONABLE 113W

**BW: 74 | 205 WT: 450 | 5/8 SM 3/8 BR |**

Kaylani's grandsire is the South African Simmental bull imported by Fred Scheutze. He produced THE top marbling bull in Simbrah at that time who sired this heifer. Her dam is by PRR Alamo, our top all purpose bull. We rely on him to breed our heifers but he produces outstanding calves in all respects - polled, good color pattern, good mamas, and impressive sons. She is bred to PRR Prophet 613J whose sire is now working in Carlos Rascon's herd. Prophet has fleckvieh on his dam's side. His API is a high 118 - percentile 2.

CE	9.5
BW	2.2
WW	60.9
YW	88.9
MCE	4.4
MILK	19.7
MWW	50.1
API	104.1
TI	62.8



## 16 PRR FOXY 304K

TATTOO: 304K | ASA#: 4227783 | DOB: 9/6/2022 | P | PINE RIDGE RANCH LLC

**SIRE** PRR ALAMO 690Y  
#2636889

{ PRR PALISADE 813T  
PRR ETTA 2S

**DAM** PRR TIFFANY 256H  
#3893095

{ PRR PAVILLION 716D  
PRR CRISTA 13E

**BW: 60 | 205 WT: 588 | 5/8 SM 3/8 BR |**

This is the kind of calf Alamo produces for us - beautiful and productive. She will be bred to PRR Raptor 17K, our young calving ease and carcass sire. We are excited to see his first calves. We have such high hopes for his outstanding combination of low birthweight and carcass quality - truly an all purpose bull. Our goal is to breed an attractive herd of cattle who excel in heat tolerance as well as fitting the needs of today's cattle industry for tender, high quality beef.

CE	11.3
BW	-0.8
WW	57
YW	80.3
MCE	2.4
MILK	6.5
MWW	34.9
API	90.2
TI	55.5



## 17 PRR KASSIDY 306K

TATTOO: 306K | ASA#: 4227785 | DOB: 9/8/2022 | P | PINE RIDGE RANCH LLC

**SIRE** PRR PAVILLION 716D  
#3292293

{ PRR POWERFULL 22Z  
PRR MISS PALISADE 406X

**DAM** PRR FELICE 114F  
#3475027

{ PRR ALAMO 690Y  
PRR AMARODEO 429U

**BW: 76 | 205 WT: 642 | 5/8 SM 3/8 BR |**

Take a look at PRR KASSIDY - she will be a beautiful asset to any herd. Her sire is outstanding in a long line of bulls we have used over our 50 years in the Simbrah business. She is AI'd to Alamo, another top sire in our history. Her pasture sire is a high ranking young bull. Her calf should be outstanding. Do not miss out on this female!

CE	7.1
BW	3
WW	66.9
YW	92.4
MCE	1
MILK	8.9
MWW	42.3
API	76.1
TI	54.4

# Bred Heifer Lots



## 18 PRR FANTASIA 324K

TATTOO: 324K | ASA#: 4227790 | DOB: 9/12/2022 | P | PINE RIDGE RANCH LLC

**SIRE** PRR PINNACLE 676D  
#3292273

{ PRR CHOICE 565W  
PRR BUDDYS BABE 203A

**DAM** PRR ALLIE 239A  
#2848304

{ PRR TOPLINE 327X  
PRR VALLIE 135W

**BW: 30 | 205 WT: 432 | 5/8 SM 3/8 BR |**

An outstanding daughter of PRR Pinnacle 676D who we have used extensively in our herd. He is now working in Doug Phelan's herd. She is AI'd with heifer-sexed semen to WHR Paladin K32, a young bull we purchased from Larry and Susan Daniels who used the calving ease sire PRR Alamo in their herd until his 12th year. We are confident his young son will be a calving ease bull like his sire.

CE	6.8
BW	2.8
WW	59.8
YW	83.7
MCE	3.9
MILK	9.8
MWW	39.6
API	89.2
TI	55.6



## 19 PRR BUTTEFLY 334K

TATTOO: 334K | ASA#: 4227796 | DOB: 9/16/2022 | P | PINE RIDGE RANCH LLC

**SIRE** PRR PROPEL 696D  
#3292285

{ PRR PILGRIM 008X  
PRR AMADOORN 885T

**DAM** PRR DELIGHT 306F  
#3576424

{ PRR ALAMO 690Y  
PRR MISS MAX 359X

**BW: 82 | 205 WT: 620 | 5/8 SM 3/8 BR |**

Kenneth Airheart picked these cattle out for this sale and didn't he do a job. We always bring some of our best to a sale but he has skimmed the top. Here is another heifer who has it all - looks, productivity, fertility, docility.. Another top prospect bred to calving ease and carcass bulls. She was born early in the season and will probably calve then too giving you plenty of time for breed back. You will like her calf.

CE	5.9
BW	2.6
WW	59.1
YW	86.5
MCE	3.4
MILK	12.4
MWW	41.8
API	88.1
TI	54.3



## 20 PRR BUTTERCUP 336K

TATTOO: 336K | ASA#: 4227798 | DOB: 9/17/2022 | P | PINE RIDGE RANCH LLC

**SIRE** PRR BIG EASY 626G  
#3743292

{ PRR PROPEL 696D  
PRR CATERINA 94C

**DAM** PRR PAVILLION PET 630G  
#3742711

{ PRR PAVILLION 716D  
PRR SHEZA TROUPER 873T

**BW: 78 | 205 WT: 662 | 5/8 SM 3/8 BR |**

Sired by our young growth bull PRR Big Easy, Buttercup had a weaning index of 111. Add her beautiful phenotype to the tenderness bloodline on the bottom and you have an outstanding young female. We hate to let go of this girl as she is bred to have one of the first calves by our young high indexing sire PRR Raptor 17K. He will guarantee good numbers for marbling, calving ease and API.

CE	3.2
BW	4.2
WW	70.9
YW	98
MCE	2.1
MILK	14.7
MWW	50.1
API	77.7
TI	55.8



## 21 PRR CARLY 340K

TATTOO: 340K | ASA#: 4227801 | DOB: 9/18/2022 | P | PINE RIDGE RANCH LLC

**SIRE** PRR PAVILLION 716D  
#3292293

PRR POWERFULL 22Z  
PRR MISS PALISADE 406X

**DAM** MISS WF PIPPER ROTE S2  
#2836273

DDD SARGENT ROTE 211U  
BHR PIPPER SA X291E

**BW: 98 | 205 WT: 688 | 3/4 SM 1/4 BR |**

A few years back we bought a fine full Fleckvieh cow from Fred Schuetze at Buzzard Hollow. This 3/4 x 1/4 heifer is one of several excellent calves she has produced for us. She is a growthy girl who should have a beautiful udder full of milk. She is AI'd to PRR Alamo, our homozygous polled calving ease sire who has produced many, many excellent calves for us. The pasture sire is a young bull with great prospects being sired by PRR Pinnacle and out of a cow from the Optima bloodline. PRR Optima 677J produced over 70 calves by embryo transfer, lived to the age of 18 with a calf at side and a good udder and feet.

CE	1.8
BW	6.5
WW	72.8
YW	97.2
MCE	-1.3
MILK	19.8
MWW	56.1
API	81
TI	58.5



## 22 PRR KENNA 357K

TATTOO: 357K | ASA#: 4227811 | DOB: 9/28/2022 | P | PINE RIDGE RANCH LLC

**SIRE** PRR PAVILLION 716D  
#3292293

PRR POWERFULL 22Z  
PRR MISS PALISADE 406X

**DAM** PRR OPTIMUM BLAZE 154E  
#3412504

PRR OPTIMUM 892T  
PRR NATALYA 227C

**BW: 92 | 205 WT: 702 | 5/8 SM 3/8 BR |**

With a whopping 116 weaning index this girl has lots of growth in a beautiful package. We have brought our best to this sale. Bred to PRR Alamo for a polled calf that comes easy. The pasture bull is our young high indexing, high marbling calving ease bull PRR Raptor 17K. The perfect combination - growth and carcass quality.

CE	4.4
BW	4.1
WW	61.4
YW	83.1
MCE	1.5
MILK	9.6
MWW	40.1
API	73.2
TI	49.9



## 23 PRR CHRISTI 358K

TATTOO: 358K | ASA#: 4227812 | DOB: 9/29/2022 | P | PINE RIDGE RANCH LLC

**SIRE** PRR PAVILLION 716D  
#3292293

PRR POWERFULL 22Z  
PRR MISS PALISADE 406X

**DAM** PRR SHE'S RITE 650D  
#3249383

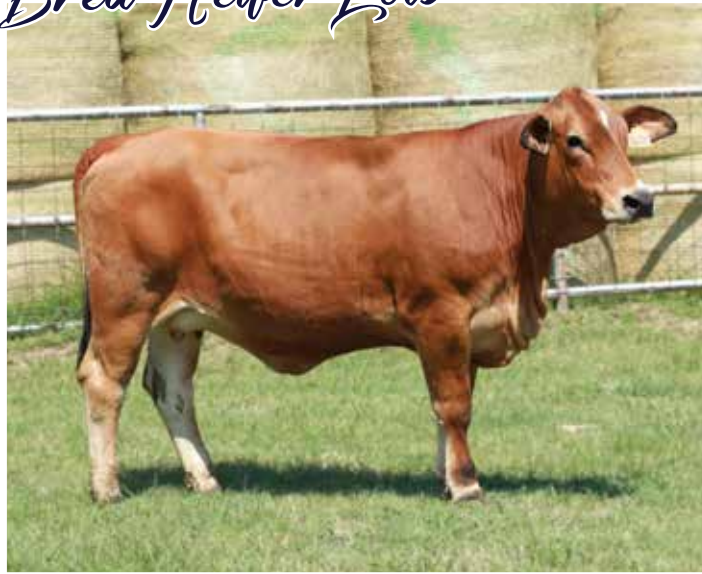
PRR CHOICE 565W  
TORTORICI LILLY 73A

**BW: 86 | 205 WT: 656 | 5/8 SM 3/8 BR |**

Another beautiful heifer by PRR Pavillion 716D bred to have an excellent calf that comes easy and grows fast. A collection of these heifers would put someone in a great position to capitalize on the coming boom in the cattle market with eye appealing cattle that perform in the South and meet the needs of the cattle industry. You will love the quality calf she delivers.

CE	5
BW	4.9
WW	74.3
YW	104.1
MCE	1.3
MILK	12.4
MWW	49.4
API	75.3
TI	57.1

# Bred Heifer Lots



## 24 PRR BONITA 368K

TATTOO: 368K | ASA#: 4227855 | DOB: 10/1/2022 | P | PINE RIDGE RANCH LLC

**SIRE** PRR PAVILLION 716D  
#3292293

{ PRR POWERFULL 22Z  
PRR MISS PALISADE 406X

**DAM** PRR ELIZABETH 641Y  
#2629760

{ PRR OPTIMUM 892T  
PRR MISS DAZZLE 351N

**BW: 90 | 205 WT: 612 | 5/8 SM 3/8 BR |**

This heifer is a different color pattern but look at the tremendous depth of body and power she has. Her grand sire on the bottom was so compact and deep bodied that we were ridiculed for using him, but our goal is a moderate frame efficient animal with large capacity and plenty of muscle. Bred to proven and exciting calving ease bulls.

CE	3.5
BW	4.3
WW	60.5
YW	80.3
MCE	1.6
MILK	13.5
MWW	43.7
API	67.3
TI	47.7



## 25 PRR CARMEN 397K

TATTOO: 397K | ASA#: 4227827 | DOB: 10/20/2022 | P | PINE RIDGE RANCH LLC

**SIRE** PRR PAVILLION 716D  
#3292293

{ PRR POWERFULL 22Z  
PRR MISS PALISADE 406X

**DAM** PRR PERFECT OPTIMA J68C  
#3020023

{ PRR RITO 545W  
PRR OPTIMA 677J

**BW: 82 | 205 WT: 618 | 5/8 SM 3/8 BR |**

Carmen is a growthy heifer expecting a heifer calf from her AI date with the high marbling and calving ease sire PRR Raptor 17K. Her bloodlines go way back in the Simbrah breed. Her sire goes back to Sally Buxkemper's tenderness bull RX Amarula and her dam is by PRR Rito, a very successful bull in Mexico and out of our most successful donor cow PRR Optima.

CE	3
BW	4.4
WW	66.5
YW	89.2
MCE	0.5
MILK	17
MWW	50.2
API	71.1
TI	52.5



## 26 PRR VERYCHOICE 170K

TATTOO: 170K | ASA#: 4223172 | DOB: 10/30/2022 | P | PINE RIDGE RANCH LLC

**SIRE** PRR CHOICE 565W  
#2513493

{ PRR PREVAIL 774S  
PRR OPTIMA 677J

**DAM** PRR VERY SPECIAL 229U  
#2448241

{ PRR ALL PRO 52R  
PRR MISS LIGHT 012N

**BW: 0 | 205 WT: 0 | 5/8 SM 3/8 BR |**

VERYCHOICE is an embryo calf out of our best genetics, bot on the top and bottom. She is AI'd with heifer-sexed semen to an outstanding young bull PRR Raptor 17K. He should be a calving ease bull. Give her a look and you will like what you see!

CE	9.5
BW	0.8
WW	49.5
YW	71.3
MCE	6.2
MILK	7.8
MWW	32.5
API	79.8
TI	48.3



## 27 PRR DIVA 412K

TATTOO: 412K | ASA#: 4227836 | DOB: 10/30/2022 | P | PINE RIDGE RANCH LLC

**SIRE** PRR PAVILLION 716D  
#3292293

{ PRR POWERFULL 22Z  
PRR MISS PALISADE 406X

**DAM** PRR CLARISSA 629D  
#3249374

{ PRR POWERFULL 22Z  
PRR DAISY 258X

**BW: 74 | 205 WT: 502 | 5/8 SM 3/8 BR |**

What a DIVA! This beautiful blaze faced heifer will have a heifer calf soon if she is pregnant to her AI breeding to WHR Paladin K32. He should be a calving ease bull like his sire. She is pasture exposed to him also. We feel sure Diva will be a great producer any addition for any program.

CE	6.7
BW	3
WW	60.9
YW	81.6
MCE	1.5
MILK	7.9
MWW	38.3
API	69.2
TI	48.4



## 28 PRR MY CHOICE 163K

TATTOO: 163K | ASA#: 4223165 | DOB: 11/24/2022 | P | PINE RIDGE RANCH LLC

**SIRE** PRR CHOICE 565W  
#2513493

{ PRR PREVAIL 774S  
PRR OPTIMA 677J

**DAM** PRR VERY SPECIAL 229U  
#2448241

{ PRR ALL PRO 52R  
PRR MISS LIGHT 012N

**BW: 0 | 205 WT: 0 | 5/8 SM 3/8 BR |**

This beautiful heifer was produced by embryo transfer from PRR Choice, one of our long time greatest sires and a beautiful donor cow who produced many daughters in our herd. She is AI'd to PRR Raptor 17K, a calving ease sire who has to highest API and TI in the breed. Her pasture bull is a half brother to Raptor with calving ease and an excellent marbling score.

CE	9.5
BW	0.8
WW	49.5
YW	71.3
MCE	6.2
MILK	7.8
MWW	32.5
API	79.8
TI	48.3



## 29 PRR LEONA 7L

TATTOO: 7L | ASA#: 4277513 | DOB: 2/18/2023 | P | PINE RIDGE RANCH LLC

**SIRE** PRR JACKPOT 265H  
#3922119

{ PRR ACHILLES 285A  
PRR ESMARIE 160E

**DAM** PRR JEMMA 449J  
#3970872

{ PRR POSITIVE 150E  
PRR GLOWING 245C

**BW: 92 | 205 WT: 534 | 5/8 SM 3/8 BR |**

Not just a pretty face. This heifer's grandsire was a Simmental bull imported from South Africa by Fred Schuetze who was found to carry an important tenderness gene. She will have you a heifer calf by our high API, marbling and calving ease sire Raptor or a stout baby by WHR Paladin K32. Both are calving ease bulls with growth and marbling.

CE	1.3
BW	5.5
WW	66.9
YW	96.9
MCE	1.4
MILK	17.3
MWW	50.6
API	99.8
TI	62.7

In 1974 Bill and Jane Travis of Pine Ridge Ranch bought two Fleckvieh Simmental bulls to use on their Brahman cross cattle. After weaning weights went up 124 pounds that year, Bill decided that the ideal hot weather cow would be a combination of those two breeds with red color, white on the face and dark skin pigment like most tropical animals.

The polled gene wasn't common then, but would be something to add.

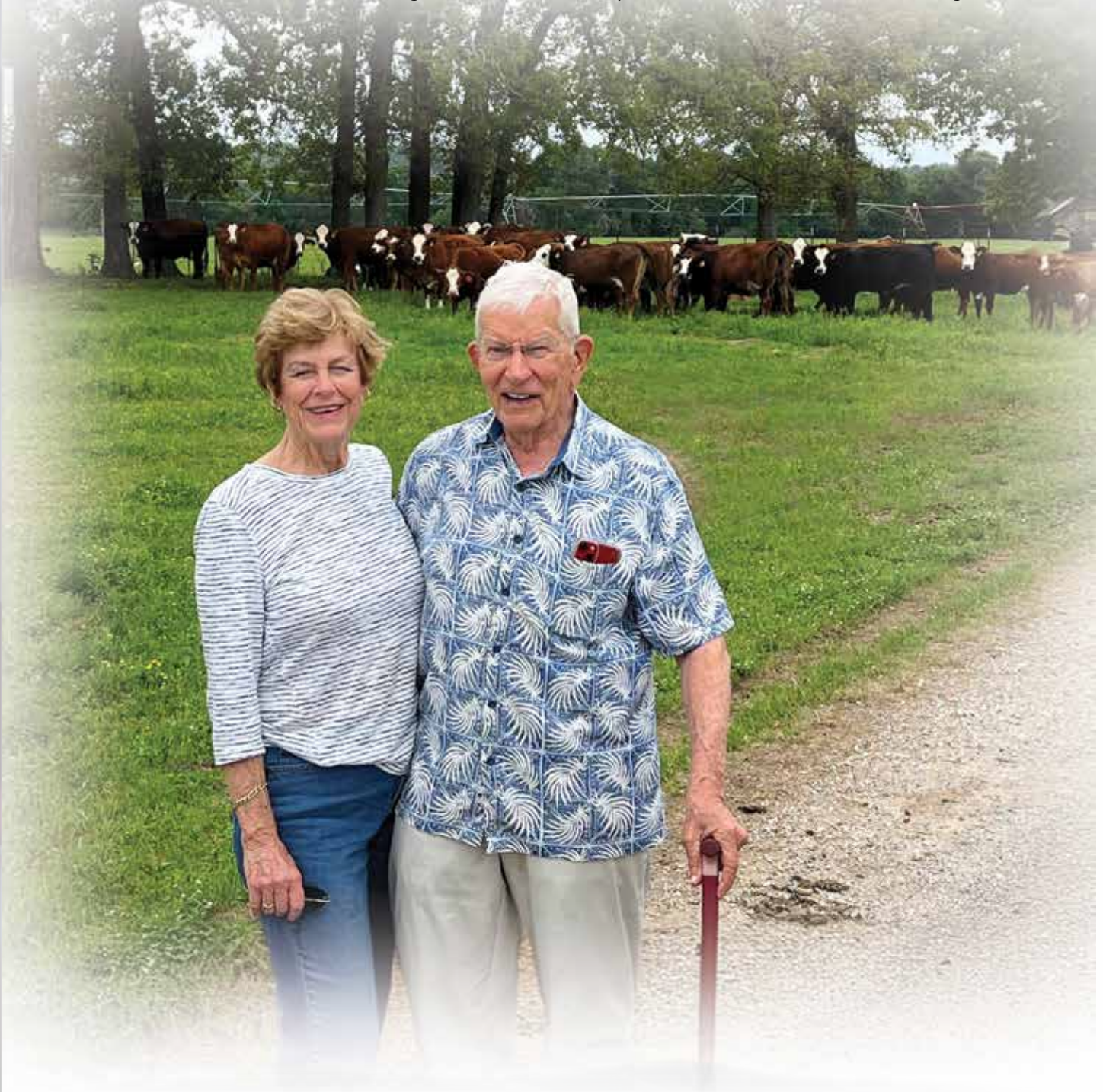
"On a trip to the State Fair, we saw some Simbrahs tied to the rail that looked right to us," explained Bill.

"So we started buying Simbrahs to gradually replace our commercial cattle. We wanted them to be long sided with

deep flanks, polled and red blaze faced. As we became more aware of the beef side of the business, we adopted technology such as tenderness testing and ultrasound to determine which bloodlines performed better."

They found the best performing animals were multiplied using semen collection and embryo transfer, resulting in purebred Simbrah steers that grade 90%choice or prime meeting current expectations in the beef industry.

Today they are known for their Simbrah cattle which are fertile, gentle, beautifully consistent with good udder quality. They continue to refine and improve their herd and invite you to come and visit them at Pine Ridge Ranch.



# Right to Flush



## 30 WHR KATIE

TATTOO: 200-H | ASA#: 3752442 | DOB: 1/30/2020 | P | PINE RIDGE RANCH LLC

**SIRE** PRR ALAMO 690Y  
#2636889

{ PRR PALISADE 813T  
PRR ETTA 2S

**DAM** WHR PREVAILS MOON  
#2562034

{ PRR PREVAIL 774S  
FLCC/PRR MSLOUISIANA398P

**BW: 0 | 205 WT: 0 | 5/8 SM 3/8 BR |**

CE	12.7
BW	-0.1
WW	51.8
YW	75.9
MCE	5
MILK	-0.1
MWW	25.7
API	82.1
TI	51

Since we sold Alamo to our friends Larry and Susan Daniel in Jacksonville we have been buying some of the calves they have produced. This one has been a standout in our herd. She is nursing a nice bull calf by PRR Big Easy 626G and is bred to PRR Optimal 677J, a gorgeous young sire we put to work last fall. We are excited to see the quality calves he produces. Make a donor out of this cow and you'll be in business.

Pine Ridge Ranch is selling the RIGHT TO FLUSH this tremendous young PRR Alamo daughter. She is currently bred to calf in the Spring of 2025. Pine Ridge Ranch will let the buyer know after the calf is born so a flushing schedule can be determined. All costs are the responsibility of the buyer. The buyer will receive all embryos produced. DNA has been submitted for her Donor status.

# Bred Heifer Lots



## 31 MS STRACK K580

TATTOO: K580 | ASA#: 4219378 | DOB: 10/17/2022 | P | STRACK FARMS

**SIRE** MR STRACK H184 { HR RED LABEL E 31  
#3776088 MS STRACK C426

**DAM** FFR KEYANNA { IVR ROLAND T705  
#2599683 FFR KEONA'S CHROME U217E

**BW: 90 | 205 WT: 0 | 3/4 SM 1/4 BR |**

This 3/4 x 1/4 Simbrah heifer is out of a very good Fleck cow, and a bull I raised with LMC genetics, and a Sand Ranch Hand daughter in his pedigree. The heifer has a great disposition, and is bred to PRR King Pin for a 5/8 x 3/8 calf in late January. Palpation info at sale.

CE	2.7
BW	6.6
WW	66.4
YW	92.3
MCE	1.8
MILK	26.2
MWW	59.2
API	84.1
TI	58



## 32 MS STRACK K582

TATTOO: K582 | ASA#: 4228318 | DOB: 10/20/2022 | P | STRACK FARMS

**SIRE** RTOP MAXAMILLION 1107F { MORELLO  
#3722730 RTOP MS STELLA 1120C

**DAM** HR FABULOUS D3 { LMC RED ALERT 5A/25  
#3135589 MS HR STRACK A369

**BW: 78 | 205 WT: 0 | 3/4 SM 1/4 BR |**

This heifer is going to be hard to part with. Her Sire is RTOP Maxamillion. I purchased The semen here at Fall Fest three years ago from Kenneth Airheart. I got three heifers out of this mating and decided to offer one here. The Dam of K582 is a great cow with a very good pedigree. She is bred to Mr Strack K590. To calve in December, and I will have palpation info at the sale.

CE	5.7
BW	4.1
WW	63.7
YW	86.6
MCE	3.4
MILK	26.3
MWW	58.1
API	89.2
TI	60.2



## 33 MS STRACK K606

TATTOO: K606 | ASA#: 4228321 | DOB: 12/11/2022 | P | STRACK FARMS

**SIRE** PRR KING PIN 49H { PRR CONCORD 614D  
#3792158 PRR SHARITA 976Z

**DAM** HR ULTIMA C8 { LMC RED ALERT 5A/25  
#3005030 FFR TAMMY

**BW: 82 | 205 WT: 0 | 5/8 SM 3/8 BR |**

K606 is very long bodied, and has an attractive neck. She is sired by PRR King Pin. I am super pleased with his calves. Her Dam is out of an LMC Bull and a fleckvieh cow. This heifer is bred to Mr Strack K590, to calve in January or February. Palpitation info at sale.

CE	6.2
BW	3.8
WW	57.7
YW	81.3
MCE	3.9
MILK	16.6
MWW	45.4
API	87.3
TI	55





### 34 MS STRACK K610

TATTOO: K610 | ASA#: 4228323 | DOB: 12/19/2022 | P | STRACK FARMS

**SIRE** PRR KING PIN 49H  
#3792158

PRR CONCORD 614D  
PRR SHARITA 976Z

**DAM** MCR MS SISSY WOO C632  
#3067372

ZZ MR FIRE Z363  
SMITH TMP SISSY 13A

BW: 72 | 205 WT: 0 | 5/8 SM 3/8 BR |

This King Pin daughter is a very attractive, moderate heifer, who should be an easy keeper. Just look at the genetics on the Dam's side. You will see a who's who of the breed. K610 is bred to Mr Strack k590 to calve in January. Palpation info will be at the sale.

CE	10.4
BW	0.6
WW	58.8
YW	82.6
MCE	6.9
MILK	14.2
MWW	43.5
API	85.1
TI	56



### 35 4B HERSHEY'S CHOCOLATE 9K

TATTOO: 9K | ASA#: 4106159 | DOB: 1/10/2022 | P | 4B SIMMENTAL

**SIRE** 4B LOAD ME UP 109E  
#3408981

W/C LOADED UP 1119Y  
4B MARSHMALLOW

**DAM** 4B HERSHEY 46X  
#2558791

GONSIOR/MS PERFECT1 U95  
4B MARSHMALLOW

BW: 74 | 205 WT: 570 | PB SM |

4B Simmentals is reluctantly offering this Load Me Up daughter as she has been a standout since she was born. She is super feminine but with tremendous depth of rib. She is bred to Bar E MR Cowboy 171H (Red Angus). She will calve this Fall delivering you a 1/2 Simmental x 1/2 Red Angus. Hybrid vigor right from the start. The sky is the limit with this young female.

CE	8.7
BW	3.7
WW	77.3
YW	109.8
MCE	3.6
MILK	18.8
MWW	57.4
API	108.7
TI	69.5



### 36 4B CIMARRON 0142K

TATTOO: 0142K | ASA#: 4238194 | DOB: 12/30/2022 | P | 4B SIMMENTAL

**SIRE** BROWN PRESIDENT H474  
#4233451

LSF SRR PRESIDENT 8177F  
BROWN MS INDEPENDENCE E899

**DAM** JE DENNY J37E  
#3448791

LITTLE CREEK XPRESS 840X  
DDD CRIMSON CLOVER

BW: 68 | 205 WT: 635 | 1/2 SM 1/2 AR |

If you want to start a herd of 1/2 Simmental (Fleckvieh Dam) x 1/2 Red Angus (Brown President-RA Brown), you couldn't ask for a better start. Cimarron is a super sleek female that is loaded with a genetic base that you could build a herd on. The top side of the pedigree comes from the infamous RA Brown ranch which means a business that does their homework genetically every day. The bottom side has a blend of old school Fleckvieh genetics to make you pay attention. Little Creek Express, the maternal grand Sire has been producing top of the sale cattle for years but let us not forget about DDD Crimson Clover. She produced 24 progeny throughout her career. Cimarron is bred to calve early 2025. She is bred to RTOP Mr Perfection 0316K.

CE	9.7
BW	0.4
WW	69.7
YW	104.1
MCE	6.1
MILK	28.6
MWW	63.3
API	121
TI	76.1

# Bred Heifer Lots



## 37 SOT SAMANTHA FENTON J210E

TATTOO: SOT J210E | ASA#: 4051316 | DOB: 10/8/2021 | P | SIMMENTALS OF TEXAS -1

**SIRE** LITTLE CREEK FENTON 521F { ANCHOR D RAPTOR 392C  
#3601312 PROSTOCK MARJORIE 6021S

**DAM** BHR SAMANTHA A305 { DDD SARGENT ROTE 211U  
#2783320 LCF LULU 915X

**BW: 78 | 205 WT: 0 | FB SM |**

If you are looking for that POLLED female that you can build a program around, stop and look at this one; sire Little Creek Fenton 521F, the homozygous Anchor D Raptor son out of the DFM Marcus daughter, ProStock Marjorie.. Her dam is BHR Samantha A305, sired by DDD Sargent Rote, the Sunny Valley

CE	8.1
BW	5
WW	78.1
YW	116.1
MCE	6.4
MILK	34.9
MWW	73.9
API	99.1
TI	68.7

Sargent son out of Anchor T Rote. Samantha's dam is a Daytons Pol Neumann daughter which brings in BHR Dustin and BHR Zulufora a complete BLENDED Pedigree. If you look close, she is a double bred BHR Doorn daughter. Samantha has proven herself over and over again with her latest addition, to the SOT Herd Sire battery, in SOT Jetter J696. Jetter is a double bred, Polled NON DILUTOR, Anchor D Raptor son that has sired a tremendous set of calves at SOT. SOT J210E is bred to calve March 14, 2025 to SOT Jensen J726 another Anchor D Raptor son whose dam is a FSS Maximus daughter out of the South African donor BHR Windodi SA W026 that brings into the blend BHR Dustin and BHR DOORN.



## 38 SOT KAPRI K296

TATTOO: SOT K296 | ASA#: 4195012 | DOB: 8/1/2022 | S | SIMMENTALS OF TEXAS -1

**SIRE** JS ULTRA ADOLF A85 { GRINALTA'S HP ULTRA FF94  
#2765866 JS BR CHERIE X65 85

**DAM** SOT HANNAH H073 { DABNEY D823E  
#3809818 BHR TWILIGHT X319

**BW: 78 | 205 WT: 0 | FB SM |**

Kapri is a JS ULTRA ADOLF daughter, which creates a super set of numbers in all his offspring and brings in JS PL CHERIE S5 65 cow family that has done such a great job for Steve Jensen in Kansas. On her bottom side she brings those old time Fleck genetics such as MRLN Rogar, Overall Hivy, Anchor T

CE	8.5
BW	2.9
WW	74.5
YW	104.9
MCE	4.9
MILK	31.9
MWW	69.1
API	96.1
TI	65.9

rote, Sunny Valley Sargent, DDD Broadway, SRF MR BIGFOOT S144, Antonius and Siegfried. If you are looking for milk,, MCE, Marb, and backfat; you have found it. Kapri is bred to calve February 22, 2025 to SOT Awesome Winsome J715E, to add the most consistent cow family I ever had the privilege to work with LCF Winsome 690W. What a package here.



## 39 SOT LADY HENDRIX K304E

TATTOO: SOT K304E | ASA#: 4194998 | DOB: 9/7/2022 | P | SIMMENTALS OF TEXAS -1

**SIRE** BHR EARL E506E { FSS MAXIMUS  
#3320722 LCF WINSOME 690W

**DAM** CFFS MS DAZZLE 410F { SUNNY VALLEY SARGENT 24S  
#3513410 CFFS MS DAZZLE 410D

**BW: 83 | 205 WT: 0 | FB SM |**

SOT K304E is sired by BHR EARL E506E, the FSS Maximus Son out of none other than LCF Winsome 690W, that was purchased by North Forty Ranch, Deborah & Jeff Townsend from Montgomery, Texas. I purchased her dam from Shari

CE	11.6
BW	2.2
WW	65
YW	77.3
MCE	4
MILK	27.5
MWW	59.9
API	118.1
TI	67.9

Eidenschink when she and her family moved to Minnesota and I am glad I did. She was bred by Gary Cooper of Colorado, sired by Exodus whose dam was a Shawacres Jahari daughter that went back to DDD Daze a Canadian Neff daughter. Moderate framed, great udder and a producing machine. SOT K304E sells bred to calve on T5 Texas Raptor on December 5, 2024 and it will be polled and good. T5 Texas Raptor is a Anchor D Raptor son and he will add the Panzues D203 cow family to this pedigree. Do a planned mating and see what those numbers will look like.



## 40 SOT MS PANZUES OUTBACK K306E

TATTOO: SOT K306E | ASA#: 4194979 | DOB: 9/8/2022 | P | SIMMENTALS OF TEXAS - 1

**SIRE** BHR EARL E506E  
#3320722

FSS MAXIMUS  
LCF WINSOME 690W

**DAM** BHR F232  
#3590463

FSS MAXIMUS  
BHR ALBA X359

**BW: 83 | 205 WT: 0 | PB SM |**

Here is another BHR Earl Daughter whose dam is sired by FSS Maximus that goes back to GIBBYS Nicolas, BHR Dustin and then you will find BHR ARRISSA R389 that makes her a PB Simmental that is 93.75% Fleckvieh. If you are looking for volume, sound feet and legs, with a predictable pedigree that you can bred to a SimAngus for her next calf or a Red Angus this one will work. K306E is palpated bred to calve December 5, 2024 to T5 Texas Raptor which will work any day of the week.

CE	13.6
BW	0.5
WW	78.2
YW	96.4
MCE	4.2
MILK	22.3
MWW	61.4
API	119.9
TI	76.6



## 41 SOT WINSOME ADONIS K307E

TATTOO: SOT K307E | ASA#: 4195055 | DOB: 9/9/2022 | P | SIMMENTALS OF TEXAS - 1

**SIRE** BHR EARL E506E  
#3320722

FSS MAXIMUS  
LCF WINSOME 690W

**DAM** BHR DAVINA D253E  
#3226998

MUTIG  
BHR ASHANTE SA L137E

**BW: 89 | 205 WT: 0 | FB SM |**

Another BHR Earl Daughter whose dam was a MUTIG daughter out of BHR Ashante L137E. This is a pedigree that will be extinct in not to many years. SOT K306E is palpated to calve December 5, 2024, to T5 Texas Raptor, and WOW what a calf this polled one will be.

CE	7.3
BW	4.9
WW	73.7
YW	101.1
MCE	1.7
MILK	29.4
MWW	66.2
API	92
TI	65.9



## 42 SOT KIMORA K308

TATTOO: SOT K308 | ASA#: 4195048 | DOB: 05/01/2023 | P | SIMMENTALS OF TEXAS - 1

**SIRE** BHR EARL E506E  
#3320722

FSS MAXIMUS  
LCF WINSOME 690W

**DAM** BHR G292  
#3590507

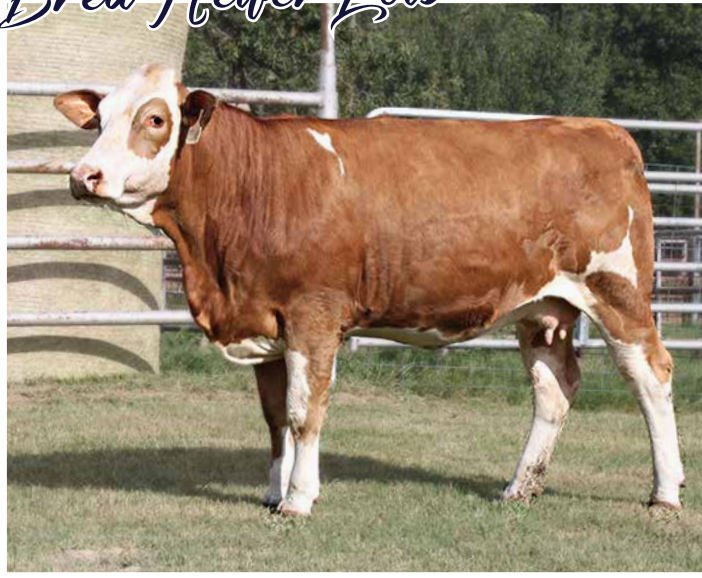
T5 ORANGE CREEK  
LCF LULU 915X

**BW: | 205 WT: | FB SM |**

Kimora is another BHR Earl E506E which brings into plat LCF Winsome 690W, that contains a touch of BHR Doorn with some Hafke and then on the bottom side you will find BHR Orange River, the cow maker, along with Daytons Pol Neumann, Hacks Fraulein, BHR Zulu and BHR Lady Pretoria. A BLENDED pedigree that will make the next generation even more impressive. Kimora sells bred to SOT Active Winsome due Feb 27, 2025.

CE	9.0
BW	4.8
WW	76.3
YW	98.1
MCE	2.2
MILK	29.2
MWW	67.3
API	97.9
TI	65.5

# Bred Heifer Lots



## 43 STARK KARSYN 12HK

TATTOO: 12HK | ASA#: 4095135 | DOB: 5/1/2022 | H | STARK CATTLE COMPANY

**SIRE** JS GABOR G223  
#3705876

WILLOW OAKS DIRK  
JS DH PANZEUS X209 223

**DAM** KFFC HAI ARGONNE  
#3798879

KFFC EXPORT MAURUS  
KFFC FANNY ARGONNE

BW: 89 | 205 WT: 0 | FB SM |

Stark Karsyn is a beautiful well put together painted heifer. She is naturally bred to T5 Texas Raptor who is a homo polled & a non-diluter bull which will result in a polled calf. Karsyn will calf close to the sale date.

CE	3.4
BW	7
WW	77.4
YW	104.2
MCE	0.4
MILK	34.9
MWW	73.5
API	82.3
TI	65



### Semen Collection and Repro Services

Semen Collection  
Shipping and Storage  
CSS Facilities  
Semen Export

Artificial Insemination  
Conventional Flush  
IVF  
AI and Ultrasonography School

### At Our Facilities and On Farm Service

18035 FM 17  
CANTON, TX 75103  
(903) 567-4044

# Bred Heifer Lots



## 44 RTOP MS PRINCESS 0315K

TATTOO: 0315K | ASA#: 4059421 | DOB: 3/15/2022 | H | K5 RAFTER TOP SIMMENTALS

**SIRE** RTOP MR RED RIVER 1006E { ANCHOR T METRO 4E  
#3722723 JS HO JAN N70 7

**DAM** RTOP CHAROLETTE 1025D { MOORMUEL  
#3722058 RTOP MS CAPELLA 305U

BW: 72 | 205 WT: 0 | FB SM |

Princess is one of two Red River daughters that we are offering this year. She is long sided with good lines. She is balanced from front to back and travels extremely well. Her Sire, RTOP Red River brings calving ease and power while her Dam, RTOP Charolette brings the milk. Princess is bred to calf late September to T5 Texas Raptor (homo polled – non-dilutor). Exciting future for this young female.

CE	7.9
BW	5.6
WW	77.2
YW	105
MCE	3.6
MILK	33.6
MWW	72.1
API	105.3
TI	70.9



## 45 RTOP MS PETUNIA 0323K

TATTOO: 0323K | ASA#: 4059424 | DOB: 3/23/2022 | H | K5 RAFTER TOP SIMMENTALS

**SIRE** RTOP MR RED RIVER 1006E { ANCHOR T METRO 4E  
#3722723 JS HO JAN N70 7

**DAM** RTOP MS SUGAR 1105F { RTOP MR AUSTIN 0329E  
#3722729 RTOP ANNA SUE 0309D

BW: 76 | 205 WT: 0 | FB SM |

RTOP Petunia is the second of our Red River daughters on offer. Petunia picks up both of her grandmother's length of body as well as frame. I have bred my cattle to be a larger frame animal simply because that is what I like. My dear friend, Henry Gunster taught me many years ago breed what you want to see in your pasture and then find the likeminded breeders to sell to. Petunia is a parentage free non-dilutor, and she is bred to a tested non-dilutor. She brings calving ease, growth and milk, bred to T5 Texas Raptor, whose pedigree reads the same. This calf could be a game changer for the buyer. Due late September.

CE	10.3
BW	3.7
WW	72.1
YW	93.3
MCE	5.6
MILK	34.8
MWW	70.7
API	114
TI	72



## 46 RTOP MS PRICELESS 0327K

TATTOO: 0327K | ASA#: 4059426 | DOB: 3/27/2022 | H | K5 RAFTER TOP SIMMENTALS

**SIRE** BHR CLARK C709E { BALU  
#3129437 LETTMAIRS ELSA

**DAM** RTOP OWENS GIRL 0127B { RTOP MR ROMEO 1118X  
#2860012 RTOP OWENS GIRL 1026X

BW: 98 | 205 WT: 0 | FB SM |

RTOP Priceless is one of the few BHR Clark daughters that I have left but I wanted to bring the top, so here she is. She is the epitome of her Sire. BHR Clark puts depth of gut, breadth and length in his progeny. Priceless pedigree truly reads old school Fleckvieh genetics. Balu, Horror, Herminator and Great Guns Moses. Let's not forget the most important influence of the cow side; Marita, Lettmairs Elsa, Ms JMC Honeybun and Great Guns Gusti. Priceless is bred to T5 Texas Raptor for a late September calf.

CE	-3.8
BW	10
WW	64.2
YW	88.1
MCE	-3
MILK	40.7
MWW	72.7
API	71.2
TI	51.2

# Cow / Calf Pair Lots



## 47 MS STRACK J267

TATTOO: J267 | ASA#: 4002040 | DOB: 5/10/2021 | P | STRACK FARMS

**SIRE** HR MEGA RED #2919219 { MR STRACK Y254  
MM MISS NIKE

**DAM** MS STRACK E580 #3401388 { MR STRACK B375  
MS STRACK U25

**BW: 84 | 205 WT: 0 | 5/8 SM 3/8 BR |**

The Mega Red daughter has a great disposition, a lot of bone, and plenty of maternal characteristics. At 35 months of age, she already has two calves to her credit. The heifer calf at her side is sired by PRR Comrade and is quite a classy girl. J267 is exposed, and more breeding info will be available at sale time.

CE	6.4
BW	4.7
WW	66.7
YW	92
MCE	2.8
MILK	19.1
MWW	52.3
API	91.8
TI	61.4



## 48 4B 86K

TATTOO: 86K | ASA#: 4207273 | DOB: 5/26/2022 | H | 4B SIMMENTAL

**SIRE** SSCH KEME FORTUNE #2651791 { SSCH SMOHALLA X501  
SSCH KENDA

**DAM** AMARIS #2692844 { JB CDN POMPEII 7009  
LAILA DA ZURITA

**BW: 75 | 205 WT: 605 | FB SM |**

4B 86K is Sired by SSCH Keme Fortune, which produced 125 calves for 4B over his career there. He was Twana's sleep at night calving ease Fleckvieh bull. On the bottom side, you have a mixture of German and South African genetics. Those genetics blend the best of the best. 86K has a beautiful 1/2 Simmental x 1/2 Red Angus heifer calf at side. Come rebreeding time you can go what ever direction you want with this young female.

CE	5.2
BW	4.9
WW	65.7
YW	93.3
MCE	0.1
MILK	28.8
MWW	61.6
API	97.9
TI	62.1



## 49 PRR SHE'S PRECIOUS 2H

TATTOO: 2H | ASA#: 3786392 | DOB: 1/26/2020 | P | PINE RIDGE RANCH LLC

**SIRE** PRR ALL PRO 52R #2296451 { RAB ALL PRO POLLED T1905  
PRR PASSIONATE 007N

**DAM** PRR MAHOGANY BLAZE 16F #3475413 { BONINAS MAHOGANY  
PRR DEANNA 440D

**BW: 80 | 205 WT: 544 | 5/8 SM 3/8 BR |**

PRR She's Precious 2H in my honest opinion, is the cow that you would want to build a program around. Put her genetics aside for a moment and just evaluate the female. Look at the length, depth, capacity and udder that this female has. Now just look at this tremendous heifer calf at side. She is doing her job and making it look easy. Now pick up the pedigree and you will see that she is the combination of years of work by Bill and Jane Travis. She's Precious is bred to calf in the Spring of 2025. Don't miss out on the opportunity to own her and make her your lead Donor.

CE	4.6
BW	3.2
WW	47.1
YW	70.1
MCE	3.2
MILK	18.2
MWW	41.6
API	65.6
TI	44



## 50 LN LMC 12TH MAN Y238

TATTOO: Y238 | ASA#: 2618938 | DOB: 6/4/2011 | S | LA MUNECA CATTLE CO. & LA NEGRA CATTLE CO.

**SIRE** 6G/LMC RAJIN CAJUN W908 { JF NET INVESTMENT 634S  
#2518598 6G EVANGELINE 5S-617

**DAM** LMC MARIAHS DREAM 3S/325 CNS DREAM ON L186  
#2382401 LMC VICTORS MARIAH

**BW: 80 | 205 WT: 740 | 3/4 SM 1/4 BR | 2 UNITS OF 3/4 SIMMENTAL X 1/4 BRAHMAN SEMEN**

We do not have a whole lot of 12th Man semen left and we are going to selectively share it in unique events like the Fall Fest Sale. This 6G/LMC Rajin Cajun son out of the LMC Mariah's Dream "Delilah" donor was one of the soundest bulls we ever worked with, and he came about this valuable trait honestly as his sire and dam both excelled at flexibility as well as structural integrity.

12th Man sired the \$25,000 LMC SSC Yolanda female that was ASA National Champion for Madison Culpepper in 2018, he is also the sire to the LMC BBS Jazmine and LMC BBS Jennie Love females that won several championships for Emily Denny and Carlos X. Guerra III, as well as Pool Farms' successful 3JP Who Dat sire that was International Champion in 2019. Semen is stored at Brushy Creek Sires and the buyer is responsible for shipping. FINAL BID X 2 = PURCHASE PRICE

CE	4.8
BW	4.3
WW	79.3
YW	115.1
MCE	2.3
MILK	24.7
MWW	64.3
API	85.2
TI	64.8



## 51 LMC ICON 3D/82

TATTOO: 3D/82 | ASA#: 3376039 | DOB: 4/3/2016 | P | LA MUNECA CATTLE COMPANY

**SIRE** FBFS WHEEL MAN 649W { SVF STEEL FORCE S701  
#2527605 SVF STAR STRUCK S199

**DAM** LMC DAYDREAM 5Z/173 LMC RHINO 5W/367  
#2694109 LMC WFC MS. DREAM GIRL

**BW: 75 | 205 WT: 567 | 3/4 SM 1/4 BR | SELLING 5 UNITS OF 3/4 SIMMENTAL X 1/4 BRAHMAN SEMEN**

Our first set of LMC Icon babies have been weaned and he has proven himself to be a dependable calving ease sire thus far. The Icon sired cattle have been eye appealing, well balanced, and have been selling with ease. Icon's sire FBFS Wheel Man was the 2012 Grand Champion Simmental Bull at the National Western in Denver, and his dam is the popular LMC Daydream donor who is a direct daughter of the famous LMC WFC Ms. Dream Girl.

Icon is desirable in his frame score, long bodied, and stout structured. He is currently in the Top 15% for Weaning Weight, Top 20% for Yearling Weight, and Top 30% for API. Bid with confidence here. Semen is stored at Brushy Creek Sires and the buyer is responsible for shipping.

FINAL BID X 5 = PURCHASE PRICE

CE	9.5
BW	3.8
WW	73.8
YW	104.6
MCE	5.6
MILK	10.7
MWW	47.5
API	95.1
TI	64.3



## 52 MR 6G S LMC RODMAN 5F21

TATTOO: 5F21 | ASA#: 3581317 | DOB: 6/3/2018 | P | BOENING BROS. & LA MUNECA CATTLE COMPANY

**SIRE** 6G BATMAN 5C76 { LMC ARCADIO 5X/116  
#3136193 6GLMC BLACKBERRY W915

**DAM** MS GOLDIE 5B52 { LMC GOLD MEDAL 5Z/75  
#2964010 LMC LF TANYA 5Y/86

**BW: 70 | 205 WT: 0 | 5/8 SM 3/8 BR | SELLING 5 UNITS OF PUREBRED SIMBRAH SEMEN**

We are excited to debut Rodman here at the Fall Fest Sale. He is a new bull we own in partnership with our good friends at Boening Bros. who used him last season and they are impressed with his first set of calves to be born there at BBS.

Rodman is sired by 6G Batman, a direct son of the 2011 National Champion Simbrah Bull LMC Arcadio. His dam is Ms Goldie 5B52, a LMC Gold Medal daughter who was Reserve Supreme Champion American Female at the competitive Houston Junior Show in 2017 as a pair and Grand Champion at Junior Nationals in 2016 for Robert Stavinoha. Do not miss the opportunity to get in on the ground floor of this meat wagon of a sire who is in the Top 10% for Weaning Weight, Top 15% for Yearling Weight, and Top 20% for Average Daily Gain. Semen is stored at Brushy Creek Sires and the buyer is responsible for shipping. FINAL BID X 5 = PURCHASE PRICE

CE	5.8
BW	4
WW	76
YW	110.3
MCE	3.5
MILK	15.6
MWW	53.5
API	72.9
TI	61.9

# Semen Lot



## 53 T5 TEXAS RAPTOR

TATTOO: H15 | ASA#: 3849432 | DOB: 10/1/2020 | K5 RAFTER TOP SIMMENTALS

**SIRE** ANCHOR D RAPTOR 392C #3264308 { VIRGINIA MAXIMUS ANCHOR D ZILEY 392Z

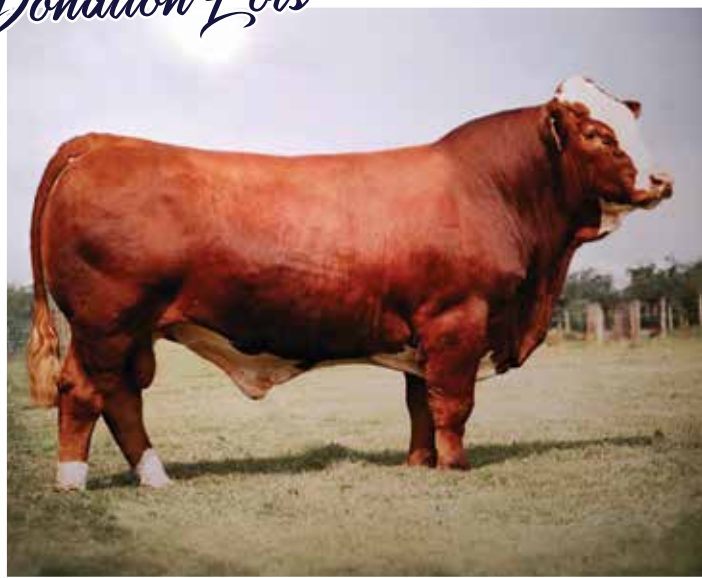
**DAM** JS AD PANZUES D203 62 #3243602 { JS ULTRA ADOLF A85 JS XMN PANZUES Z223 203

BW: 78 | 205 WT: 0 | FB SM |

I purchased T5 Texas Raptor from Larry Throgmorton in the Spring of 2023. An own son of Anchor D Raptor (bred and raised by Dan Skeels of Canada) and his Dam JS AD Panzues D203 62 which is in Simmentals of Texas Donor pen. T5 Texas Raptor's pedigree speaks for itself. Calves are on the ground out of him with more coming this Fall and a bunch more coming in the Spring of 2025. He has a kind disposition and is an extremely easy keeper. Deep Red and smooth made. He is Homozygous polled and a tested non-diluter. Offering two (2) ten(10) unit lots on this young herd sire.

CE	7.9
BW	3.1
WW	80.3
YW	109.2
MCE	3
MILK	38
MWW	78.1
API	105.1
TI	71.9

# Donation Lots



## 54 BHR NEWTON M865E

TATTOO: BHR M865E | ASA#: 2194134 | DOB: 10/31/2002 | H HUBNIK FARMS

**SIRE** BHR DOORN G629E #1964533 { OVERAL BIRNER WISP-WILL PETAL

**DAM** BHR LADY SUSI J067E #2065617 { KYKSO HADAU CONGOSIM SUSI

BW: 80 | 205 WT: 635 | FB SM |

BHR Newton M865E was a tremendous Herd sire for Louis Hubnik. His parents were BHR Doorn G629E and BHR Lady Susi J067E. A proven pedigree with good calving ease and above average milk. There is also longevity in this pedigree. His current production numbers are 122 progeny. This is a donation lot so graciously given by Mr Hubnik. There are 178 straws available. The buyer or buyers are responsible for shipping.

CE	6.9
BW	5.5
WW	58.7
YW	80.3
MCE	4.7
MILK	36.2
MWW	65.4
API	86.1
TI	50.7

## 55 SMITHBILT MOLSON 21M

TATTOO: | ASA#: 2372222 | DOB: | 01/05/2002 | LANGFORD'S SIMMENTALS

**SIRE** GIDSCO APPOLLO 3F #2155929 { ANTONIUS MFL BRENDA 65B

**DAM** JERICOS`S DEIRDRE 21D #2582639 { DEMBY MR IMAGE 853B JERICOS BEAUTY 122B

BW: | 205 WT: | FB SM |

Smithbilt Molson 21M is as good a cow maker as any. He is the Sire to Little Creek Express and when he was used back on South African genetics he did a super job. Everyone knows what Little Creek Express has done over the years. Molson brings calving ease, a good birth weight, maternal calving ease and milk. He ranks in the top 10% for API and top 40% for TI. 2 straws of semen are available on Smithbilt Molson Donated by Langford's Simmentals

CE	10.3
BW	2.7
WW	69.0
YW	95.3
MCE	5.2
MILK	34.0
MWW	68.4
API	114.7
TI	66.7





# *Consignor Contact Information*

These producers are available year-round with cattle to sell. If you do not get your choice bought through the sale, contact them at their Ranch. They would all welcome a call or visit to their respective ranches.

**PINE RIDGE RANCH - BILL AND JANE TRAVIS**

**214-850-6308**

**POWELL SIMBRAH - ROBBY AND KIM POWELL**

**214-514-6737**

**LA MUNECA CATTLE COMPANY - VICTOR GUERRA**

**956-607-5515**

**SEALE SHOW CATTLE - JOE SEALE**

**936-201-8272**

**LANGFORD'S SIMMENTALS - LOUIS LANDFORD**

**214-801-2966**

**STARK CATTLE COMPANY - JUSTEN AND SHELBY STARK**

**903-355-8070**

**STRACK FARMS - KEITH AND SHELLY STRACK**

**281-455-5896**

**SIMMENTALS OF TEXAS - SCOTT RIDDLE AND FRED SCHUETZ**

**817-894-0563**

**4B SIMMENTALS - RONNIE AND TWANA BROWN**

**214-577-7972**

**J & L CATTLE SERVICES - JOE AND LANNA HENSGENS**

**985-992-9119**

**MOSER CATTLE - RUSSELL AND WANDA MOSER**

**903-948-7524**

**K5 RAFTER TOP SIMMENTALS - KENNETH AND RHONDA AIRHEART**

**903-539-1666**

*Notes:*

**Thanks to all  
our consignors,  
bidders and buyers!**

*Keith, Lou and Kenneth*



## 45 years in Development of Simbrah Livestock



PRR Pinnacle



PRR Cherokee



World leader in warm weather, long lived, carcass quality cattle.

**TX** PINE RIDGE RANCH, LLC  
Bill and Jane Travis • 214/850-6308  
billtravis@simbrah.com  
Athens, Texas

Visit [www.simbrah.com](http://www.simbrah.com)



IF IT'S SIMBRAH YOU WANT...  
**WE'RE YOUR SOURCE**

.....!.....  
Monte Christo Cattle Company  
.....!.....

*Visitors Welcome*

We raise Purebred Cattle with an emphasis on Fertility and Utility.

Color Matched sets available in Solid Red, Blazed faced, or Black.

Call us today.

Jud & Margie Flowers  
12111 North Bryan Road  
Mission, Texas 78573  
956-207-2087

[judf@lonestarcitrus.com](mailto:judf@lonestarcitrus.com)

FOLLOW US ON FACEBOOK

- For Sale**
- Yearlings
  - Bred Heifers
  - Bulls