

VII ANNUAL *Spring*
PRODUCTION SALE
& CATTLEMAN'S STRATEGY
03.09.25



STgenetics[®] AND **HK**
♀ Brahman CATTLE

SALE HOSTED ONLINE AT **BESTCATTLESALES.COM**

Welcome Brahman Friends, BREEDERS AND ENTHUSIASTS

With every new year, it's hard to believe we are hosting another annual Spring Production Sale. We are excited to host this year's 7th annual event that will coincide with our first annual Cattleman's SStrategy event. As cattle producers, our motivation has always been to supply customers and breeders with great breeding cattle for the next generation, as well as educate them on new technologies and innovations to help their operations.

Whether your goals are breeding for the next generation, adding new genetics, or emphasizing feed efficiency data, the sale offerings in this year's sale are a variety of those genetics to supply those needs. We may have different roads, but we are going to the same destination, improving this great Brahman breed!

Genetics have always been the center of both STgenetics Brahman and HK Cattle. Years of selections on cow families, matings to the right bulls, feed efficiency, and phenotypes have been the criteria for both herds. As we move into a world of genomics and DNA becoming a tool to help identify traits faster, our hopes are to continue to supply animals with better data for effective breeding decisions.

We would like to invite anyone who is interested to join us at **11:00 AM Sunday, March 9th for our Cattleman's SStrategy** event at the **Genetic Development Center**, where we will discuss genomics, feed efficiency, cattle evaluation, and ways to strategically plan for your future calf crops. This will follow with our annual **Sale Party at 4:00 PM**. We will be providing food, drinks, and assistance with any questions you may have throughout the day. Visitors are also welcome to view the cattle two weeks prior to the sale by appointment.

We appreciate you taking the time to look through our sale offerings and thankful for trusting in our program. We look forward to seeing you at the International Show in Houston and we hope you will join us for a day of education, fellowship, and comradery on Sunday, March 9th!

Sincerely,

Adelyn Allen

SALE *information*

SALE LOCATION

22909 Farm to Market Rd 2154, Navasota, TX 77868

CATTLE AVAILABLE FOR VIEWING

Monday, March 3rd - Saturday, March 8th

by appointment only

SCHEDULE OF EVENTS

Sunday, March 9th:

11:00 AM - Cattleman's SStrategy

4:00 PM - Sale Party Starts

7:00 PM - Auction Closes

DINNER & DRINKS

Provided throughout Cattleman's Strategy & Sale Party

ONLINE BROADCAST

www.bestcattlesales.com

SALE CONTACTS

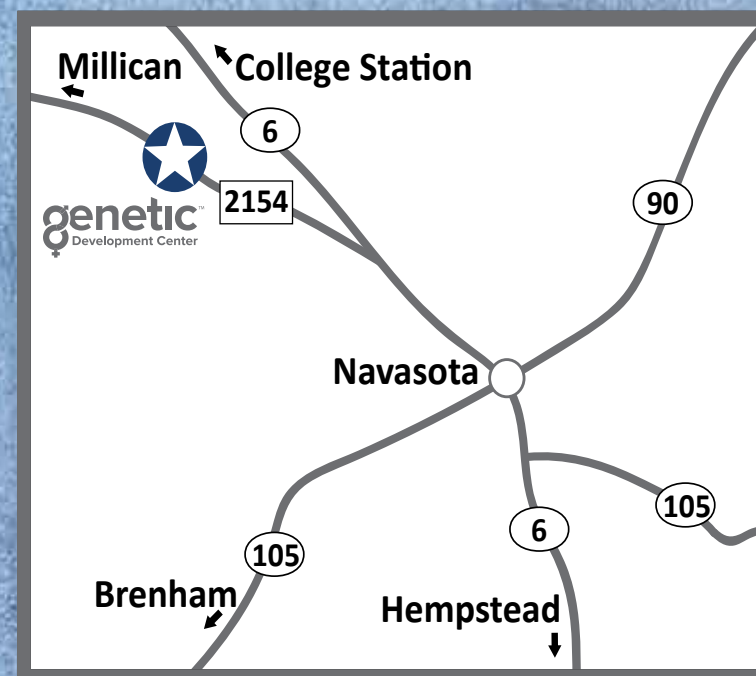
Adelyn Allen 979-229-6943

Eddy Valenzuela 979-229-8034

Dinah Weil 713-204-0995

table of contents

Sale Schedule	3
Genetic Development Explanation	4
Genetic Visions	6
How to Participate in Auction	8
Gray Female Offerings	14-16
Red Female Offerings	10-13,17-25
Semen Offerings	28
Reference Sires	26
Reference Dams	26
Terms & Conditions	30



GDC Explanation

Feed is the single biggest expense in any livestock operation. As we select for animals that are more efficient, meaning animals that are able to demonstrate gains equal to their contemporaries while consuming less feed, we are not only lowering production costs but also minimizing the environmental footprint of that animal. The goal of the Genetic Development Center through feed efficiency testing is to identify animals that will add more bottom line profit to our customers while at the same time reduce the impact on the environment, which is beneficial to everyone.

Ultrasound Scanning Results

Adapted From the Brahman Herd Improvement Records Program Manual. The Ultrasound Scanning Results Report consists of the final analysis of cattle that producers have scanned for carcass traits. Once your cattle are scanned by an approved Ultrasound Guidelines Approved Technician and have been interpreted by an approved lab, these results are reported to ABBA, added to your animal's file, and then sent to you in this format. To obtain a copy of the ultrasound guidelines, visit the ABBA website or contact the ABBA office.

This report consists of the animal's registration number, private herd number, date of birth, sex, sire and dam information, and the weight and age in days at the time of scanning.

Ribeye Area

The report gives the actual and adjusted ribeye area as well as a ration and rank for comparison within the contemporary group. The ribeye measurement is taken between the 12th and 13th rib. This measurement is a common estimator of total muscle.

The expected base Ribeye Area 1.1 in²/100 lbs of live weight. This would equate to a 1,000 lb animal having an 11.0 in² REA. Anything under this would be less than ideal, while anything over this would be exceptional.

Efficiency Index

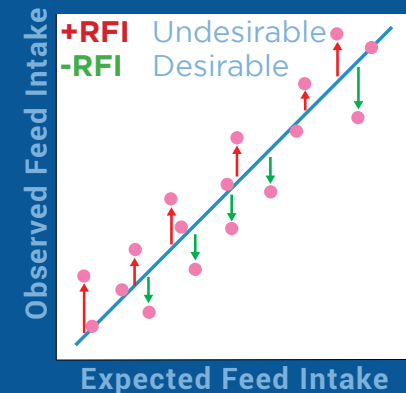
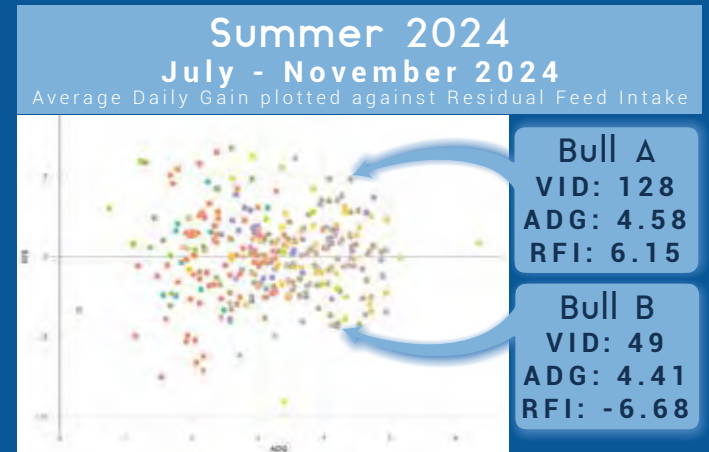
This is a multiple trait index including residual feed intake, average daily gain and age with the objective of estimating the relationship of efficiency and gain. This intake is a tool that is expected to increase growth rate and decrease feed intake of the progeny from bulls and heifers with feed efficiency phenotypes.

Residual Feed Intake (RFI)

RFI is the difference between actual intake and predicted intake based on the animal's gain, body weight, and composition. Animals on test are expected to eat "x" amount of feed according to their initial weight and target gain. The more they deviate from their expected intake, the more efficient or inefficient they are.

Feed Efficiency (FE)

FE is the amount of feed consumed as compared with the body weight gained, expressed as a ratio – lbs. of feed/lb. of gain. In the example on the right from Summer 2024, Bull A and Bull B have similar Average Daily Gain; however, there was about nine pounds difference in daily intake, making Bull B more profitable.



$$\text{RFI} = (\text{Observed FI}) - (\text{Expected FI})$$
$$\text{FI} = \text{ADG} + \text{BW}0.75 + \text{Age} + \text{Pen} + \text{RFI}$$

Percent IMF

The next columns give the results for Percent IMF (Intramuscular Fat or Marbling). The actual and adjusted measurements are given as well as the ratio and rank among the contemporaries for this trait. The IMF measurements provides an estimate of the degree of marbling or intramuscular fat deposited in the ribeye that ultimately affects the USDA Quality Grade.



Intramuscular Fat to Quality Grade Conversion

%IMF	USDA Quality Grade
2.3-3.0	Low Select
3.1-3.9	High Select
4.0-5.7	Low Choice
5.8-7.6	Choice
7.7-9.7	High Choice
9.9 & Higher	Prime

Rib Fat and Rump Fat

The next two sets of columns report the actual and adjusted measurements for rib fat and rump fat as well as give the ratios and rank among the contemporary group for these two traits. The rib fat measurement is the most common measure of external fat on a carcass and is directly related to carcass yield grade. The rump fat measurement is an indicator of the total amount of carcass fat and is correlated to percent retail product: the more rump fat, the less pounds of lean product.

USDA Carcass Preliminary Yield Grade Fat Thickness Base

Fat Thickness (in)	Yield Grade
0.10	2.25
0.20	2.50
0.30	2.75
0.40	3.00
0.50	3.25
0.60	3.50
0.70	3.75
0.80	4.00

ADG: Average Daily Gain

BW: Birth Weight

Eff Index: Multiple Trait Index

Estimating the Relationship of Efficiency and Gain

%IMF: Intra Muscular Fat

Milk: Milk

REA: Rib Eye Area

REA/CWT: REA/Carcass Weight

RFI: Residual Feed Intake

Rib Fat: Fat Measured at Rib

Rump Fat: Fat Measured at Rump

SC: Scrotal Circumference

WW: Weaning Weight

Weight at Scan: Weight at

the End of GDC Test

YW: Yearling Weight

REA

Light Muscle Cattle 0.8 in²/cwt

Average Muscle Cattle 1.1 in²/cwt

Heavily Muscle Cattle 1.3 in²/cwt

Prosser



Genomic Testing PROCESS

Genomic testing provides a remarkable insight into your herds genetic potential creating more **opportunity, accuracy and profitability.**

Vision+™ Genomic Testing Kits are available to be ordered through **Genetic Visions-ST™**. To start your genomic testing journey, email adelyn.allen@stgen.com



Start the Process

- Receive a Genomic Testing kit through Genetic Visions-ST™. Your first kit comes with everything you need; Allflex tissue sampling applicator, tissue sample unit (TSU) tube and handling instructions.

Collect Tissue Samples

- By referencing the handling instructions, collect a tissue sample from the ear of the animal, recording all animal's ID's
- Submit your animal's information that correlates to each TSU tube you submitted

Send Sample to Genetic Visions-ST™

- In a padded envelope, send all samples to Genetic Visions-ST™; (contact Adelyn Allen at adelyn.allen@stgen.com for more information)
- When samples arrive at Genetic Visions-ST™, each sample is inspected and undergoes a system validation check.

Sample Approval

- TSU Tube is spun out to process readable genomic data, approval needs to come from the lab before it can go on to evaluation
- If the test result is insufficient or low, Genetic Visions-ST™ will require the producer to submit a new sample.

Evaluation Complete & Delivered

- When all animal information is validated, the genomic results are sent to the producer. All genomic results can be customized to be delivered via excel spreadsheet, PDF file, through GeneticVisions.com or through a management software.
- All genomic results are updated online through stgen.com
- Process is completed within 30-45 days.



Why a sample may be on hold

When a sample has failed, deemed low quality or is missing correct identification, producers will be notified. When this sample is re-submitted, the process begins again.

Vision⁺ Brahman

	TEST NAME	GENOTYPES	TRAITS	DESCRIPTION
Genetic Conditions	PLAG1	QQ/Qq/qq	Birth weight and puberty	The q allele is associated with lower birth weight and earlier puberty
	Polled	PcPc/HPc/HH	Horn development	The Pc allele causes dominant polled. PcPc animals are polled and only produce polled progeny. HPc animals are polled and can produce both polled and horned progeny with 50% probability each.
	HMGA2	BB/AB/AA	Navel / penile sheath size	The B allele is associated with shorter navel
	ASIP	BB/AB/AA	Darkness of hair coat in males	The B allele is associated with darker hair in the head, neck, hump and knees
	DGAT1	AA/AB/BB	Milk fat and protein	The A allele is associated with decreased milk yield and increased fat and protein yield
	SLICK1	AA/AB/BB	Thermotolerance and hair coat	The A allele is associated with slick hair coat and thermotolerance
Tenderness	Calpain 316	CC/CG/GG	Meat tenderness	The C allele is associated with more tender meat
	Calpain 4751	CC/CT/TT	Meat tenderness	The C allele is associated with more tender meat
	Calpastatin (CAST)	CC/CG/GG	Meat tenderness	The C allele is associated with more tender meat
Milk Proteins	Beta Casein AB (BCN AB)	BB/AB/AA	Cheese production	The B allele is associated with faster milk clotting
	Beta Casein A2 BCN A2	A1A1/A1A2/A2A2	Beta-casein	Cows with A2A2 genotype produce milk containing only the A2 variant of beta-casein.
	Kappa Casein (KCN)	BB/AB/AA	Cheese production	The B allele is associated with faster milk clotting and increased cheese yield
Genomic Profile	Genomic Inbreedng	%	Genetic variability	Genomic inbreeding refers to percentage of the animal's DNA where the paternal and maternal genetic contribution are identical.
	Percentage of taurine genetics	%	Influence of taurine genetics	Genetic percentage of taurine cattle in a Brahman animal

HOW TO PARTICIPATE IN *Auction*

Visit BestCattleSales.com
and register to bid online.

Click REGISTER in the menu to create an account. After you create an account, you will need to verify your email address. Check your email inbox and make sure to look in your spam or junk folder for the verification email. If you do not see a verification email contact Best Cattle Sales.

If you already have an account, click LOG IN. You can log in EITHER with the USERNAME you created or your EMAIL and your password. If you forget your password, you can reset it by clicking the forgot password link at sign in or you can contact Best Cattle Sales and they will reset your password.

To bid you must be registered and signed in to your account. Auctions will need you to REGISTER for their auction. Look for a RED button that says REGISTER FOR AUCTION immediately above the listings in the auction. Once you are registered for the auction the red button turns green and says Registration Status: Registered.

To bid directly on the lot click the black BID button on the lot, a window will pop up with a blue PLACE BID button to confirm you want to bid. Click that button and you should receive a GREEN alert if you are the high bidder. If you receive a YELLOW alert, it means that a person has a PROXY bid on the lot and their bid is higher than your bid.

You will see a red OUT BID by the dollar amount if you have been outbid. To place a PROXY bid simply click the photo or name of the lot so you will see the detail page about the lot. Click in the blank area below the black place bid button. There you can enter an amount that is higher than the current bid and what you are willing to pay for the lot. Enter a whole dollar amount WITHOUT a dollar sign, then click the blue PLACE BID button, click the PLACE BID button on the pop-up window to confirm your bid.

If there is any bidding activity in the LAST 5 MINUTES OF AN AUCTION, that auction will enter into an extended bidding time frame. Extended bidding increments will start at 5 minutes. Extended bidding will continue until there has been no bidding activity for the duration of the set extended bidding time increment. At that time, the auction will close and all lots will be declared sold to the highest bidder.

REGÍSTRATE PARA OFERTAR EN LÍNEA

Haga clic en REGISTRARSE en el menú para crear una cuenta. Después de crear una cuenta, deberá verificar su dirección de correo electrónico. Revise su bandeja de entrada de correo electrónico y asegúrese de buscar en su carpeta de correo no deseado o basura el correo electrónico de verificación. Si no ve un correo electrónico de verificación, comuníquese con Best Cattle Sales.

Si ya tiene una cuenta, haga clic en INICIAR SESIÓN. Puede iniciar sesión YA SEA con el NOMBRE DE USUARIO que creó o con su CORREO ELECTRÓNICO y su contraseña. Si olvida su contraseña, puede restablecerla haciendo clic en el enlace de contraseña olvidada en el inicio de sesión o puede comunicarse con Best Cattle Sales y ellos restablecerán su contraseña.

Para ofertar, debe estar registrado e iniciar sesión en su cuenta. Las subastas necesitarán que se REGISTRE para su subasta. Busque un botón ROJO que dice REGISTRARSE PARA LA SUBASTA inmediatamente encima de los listados de la subasta. Una vez que esté registrado para la subasta, el botón rojo se vuelve verde y dice Estado de registro: Registrado.

Para ofertar directamente por el lote, haga clic en el botón negro BID (OFERTAR) en el lote. Aparecerá una ventana con un botón azul PLACE BID (Hacer oferta) para confirmar que desea ofertar. Haga clic en ese botón y debería recibir una alerta VERDE si es el postor más alto. Si recibe una alerta AMARILLA, significa que una persona tiene una oferta PROXY por el lote y su oferta es más alta que la suya.

Verá una OFERTA SUPERIOR roja junto al monto en dólares si ha sido superado en la oferta. Para realizar una oferta PROXY, simplemente haga clic en la foto o el nombre del lote para ver la página de detalles sobre el lote. Haga clic en el área en blanco debajo del botón negro PLACE BID (Hacer oferta). Allí puede ingresar un monto que sea más alto que la oferta actual y lo que está dispuesto a pagar por el lote. Ingrese un monto en dólares entero SIN un signo de dólar, luego haga clic en el botón azul PLACE BID (Hacer oferta) y haga clic en el botón PLACE BID (Hacer oferta) en la ventana emergente para confirmar su oferta.

Si hay alguna actividad de puja en los ÚLTIMOS 5 MINUTOS DE UNA SUBASTA, esa subasta entrará en un período de puja ampliado. Los incrementos de puja ampliados comenzarán a los 5 minutos. La puja ampliada continuará hasta que no haya actividad de puja durante el incremento de tiempo de puja ampliado establecido. En ese momento, la subasta se cerrará y todos los lotes se declararán vendidos al mejor postor.





Female
OFFERINGS

DOB: 8/18/2023

LOT 1

REG# 1064849

HK MS. GLOBAL PASSPORT 384/3



Sire: HK GLOBAL PASSPORT 848



Dam: HK MS. JACK AMERICA 114/0

+ HK PASSPORT
HK GLOBAL PASSPORT 848
HK MS. AMERICA 930

MR. 3X RED DYNASTY 75
HK MILLIONAIRIS 359/2

HK VISA 731
HK MS. X-RAY 787

+ MR. SG 111/1
HK MS. JACK AMERICA 114/0
HK MS. AMERICA 988

+ SRS MR CAPTAIN RED LEGS
+ MISS V8 210/7

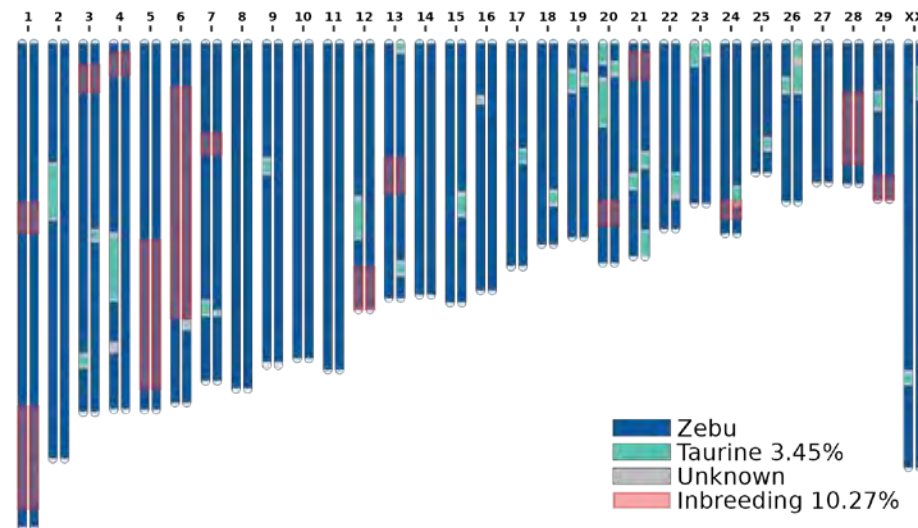
+ MR WINCHESTER MAGNUM 999
MS. 3X RED DYNASTY 3/1

GDC Summer 2024							
ADG	RFI	Rump Fat	Rib Fat	REA	IMF	Scan Weight	REA/CWT
3.31	2.24	.23	.18	8.7	2.07	815	1.1

Genetic Conditions					
PLAG 1	HMG2	ASIP	Polled	DGAT1	SLICK1
qq	AA	BB	HH	AA	BB

Meat Tenderness		
CAST	Calpain-316	Calpain-4751
CG	GG	TT

Milk Proteins		
BCN AB	BCN A2	KCN
AA	A2A2	AA



Lot 1 isn't just a heifer who captures your attention, she's the kind you want to build your herd around. A true statement to the Red Brahman breed, her combination of beauty, raw power and structural integrity will leave you speechless. Plus, she carries a pedigree built for success. Sired the exceptional Global Passport, an impressive young sire from the 930 cow by +Passport, known for consistently producing progeny with unmatched muscle, structure, and presence. 384/3 is out of the powerhouse cow, HK Ms. Jack America 114/0, recognized for her outstanding maternal excellence. With a pedigree like hers and a physical presence to match, she's destined for greatness.

HK MS. GLOBAL PASSPORT 407/3



Sire: HK GLOBAL PASSPORT 848



Dam: HK MS. AMERICA JACK 944



+ HK PASSPORT

HK GLOBAL PASSPORT 848

HK MS. AMERICA 930

MR. 3X RED DYNASTY 75
HK MILLIONAIRIS 359/2

HK VISA 731
HK MS. X-RAY 787

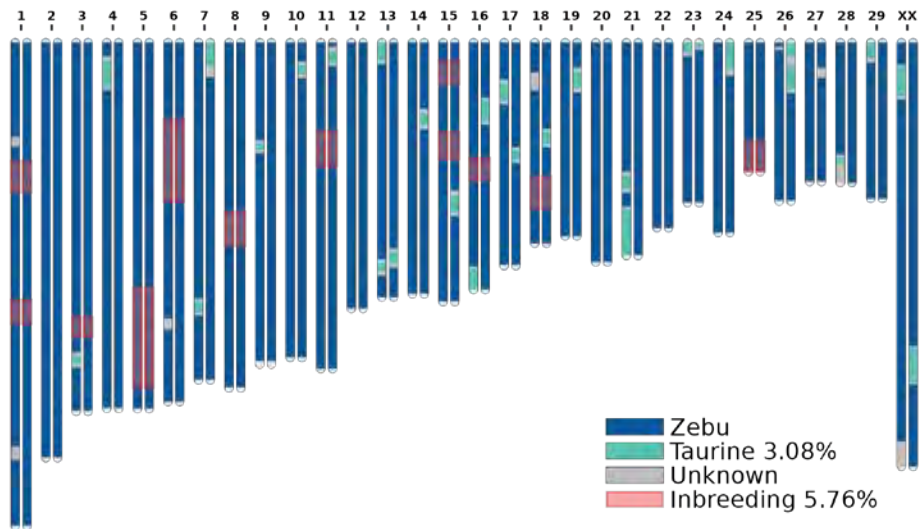
+ MR. SG 111/1

HK MS. AMERICA JACK 944

HK MISS AMERICA 129

+ SRS MR CAPTAIN RED LEGS
+ MISS V8 210/7

SRS MR. STEAMBOAT 774
BNA MISS NEL MANSO 312/2



GDC Summer 2024

ADG	RFI	Rump Fat	Rib Fat	REA	IMF	Scan Weight	REA/CWT
3.27	.78	.62	.48	11.9	2.50	1075	1.1

Genetic Conditions

PLAG 1	HMG2	ASIP	Polled	DGAT1	SLICK1
Qq	AA	BB	HH	AA	BB

Meat Tenderness

CAST	Calpain-316	Calpain-4751
CC	GG	CT

Milk Proteins

BCN AB	BCN A2	KCN
AA	A2A2	AA

The kind that's hard to part with, this female offers an elite combination of maternal excellence and sheer cow power. She is built with the strength, capacity and longevity to be a foundation female while maintaining the elegance and femininity of a top tier brood cow. Backed by a proven pedigree and strong maternal lineage, being sired by Global Passport, who is sired by +Passport and out of the 930 cow, and out of a young +Jack donor female; 407/3's a true breeding piece ready to make an impact in any program.

DOB: 8/4/2023

LOT 3

REG# 1075074

HK MS. MAGNATE 339



Sire: HK MAGNATE



Maternal Grandsire: +MR. 3H X-RAY 825

HK MAGNATE

HK MS. PASSPORT 307

HK MAGNETIC

+ HK MR. AMERICA 435/2
HK MS. PASSPORT 125/7

+ HK PASSPORT
HK MS. AMERICA 702

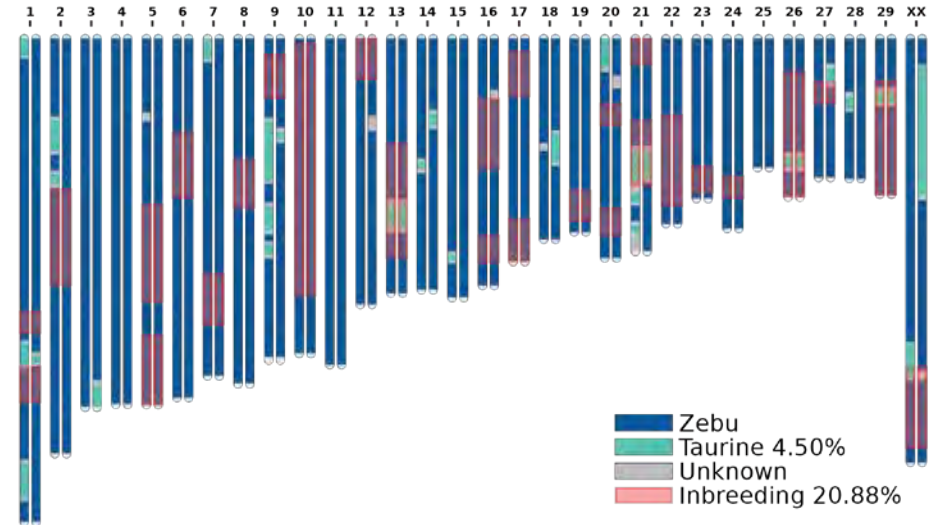
+ MR. 3H X-RAY 825

ARROW J MILLMARONE 925
+ MISS 3H 290

HK MS MIRIAM X-RAY

HK MS MAGNETIC 652

HK MAGNETIC
HK MS. PASSPORT 329



GDC Summer 2024

ADG	RFI	Rump Fat	Rib Fat	REA	IMF	Scan Weight	REA/CWT
2.26	1.39	.35	.20	9.9	2.35	1125	.9

Genetic Conditions

PLAG 1	HMG2	ASIP	Polled	DGAT1	SLICK1
Qq	AA	BB	HH	AA	BB

Meat Tenderness

CAST	Calpain-316	Calpain-4751
CG	GG	TT

Milk Proteins

BCN AB	BCN A2	KCN
AA	A2A2	AA

Francy fronted with an elite look and undeniable presence, 339/3 commands attention from every angle. She stands tall on a big foot with extra bone, all while maintaining a soft maternal rib shape and depth of flank that speaks to her broodiness and exceptional maternal potential. Sired by the highly regarded HK Magnate 607, she brings together the perfect combination of style and substance, offering both remarkable genetics and an eye-catching phenotype. She would be a valuable addition to any herd, offering a pedigree that guarantees performance and a build that promises longevity. With a heifer like this, the future is bright.

HK MS. ROCCO VISA 408/3



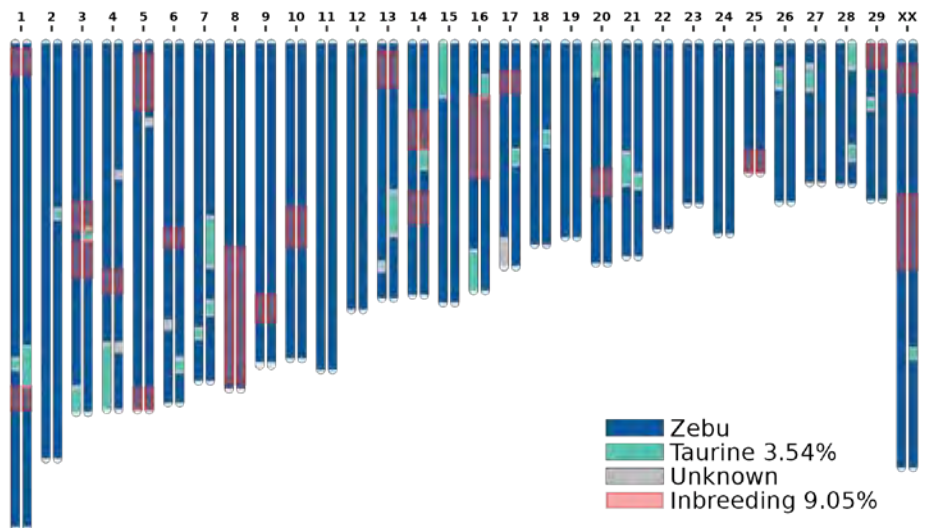
Sire: HK MR. AMERICA 280



Paternal Grandsire: + TJF MR. SMOKIN GUN



HK MR. AMERICA 280
 + TJF MR. SMOKIN GUN
 HK MS. PASSPORT 125/7
 + MR WINCHESTER MAGNUM 999
 + MS JR RED LOTTO
 + HK PASSPORT
 HK MS. BLUE BLOOD 633
 HK VISA VOLUNTEER 244
 HK VISA BRASIL
 HK MS. X-RAY 766
HK MS. VISA VOLUNTEER 12/0
 MISS J&M SEXADA 200/4
 MR. JY 634/8
 MISS T.D. WEST 332



GDC Summer 2024							
ADG	RFI	Rump Fat	Rib Fat	REA	IMF	Scan Weight	REA/CWT
2.77	1.09	.36	.19	10.1	2.77	900	1.1

Genetic Conditions					
PLAG 1	HMGA2	ASIP	Polled	DGAT1	SLICK1
qq	AA	BB	HH	AB	BB

Meat Tenderness			Milk Proteins		
CAST	Calpain-316	Calpain-4751	BCN AB	BCN A2	KCN
CC	GG	CT	AA	A2A2	AA

Built powerfully with extra extension, this stylish outlined heifer is a daughter of the proven Mr. America 280, a sire known for passing down impressive size, muscle and outstanding performance. She combines his growth driven traits with an elite look being beautifully made ahead of her shoulder, level down her top, and ultra maternal in her rib and flank. This big footed stout made female offers outstanding growth focused potential and is an ideal prospect for those looking to add both performance and style into their herd.

DOB: 11/15/2024

LOT 5

REG# 1064639

MISS J&M MANILA 654/3



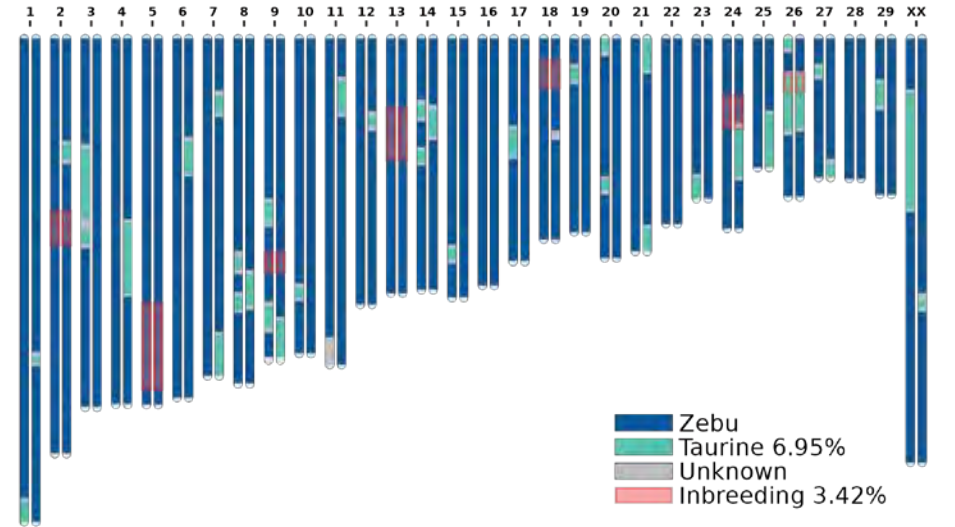
Sire: MR. H BOGOTA MANSO 253/1



Dam: JDH LADY SAV MANSO 733/0

+ MR H MADDOX MANSO 684 + JDH MR. MANSO 360/1
 + LADY HERITAGE MANSO 173
MR. H BOGOTA MANSO 253/1
 + SRS MISS RANCHER 770 ——— SRS MR. RANCHERO 666
 SRS MISS REX 520

+ JDH MR MANSO 840 (+) JDH ATLAS MANSO 328/3
 + JDH LADY MANSO 953/3
JDH LADY SAV MANSO 733/0
 JDH MS. QUEENIE MANSO 340/0 ——— + JDH MR ELMO MANSO
 JDH LADY MANSO 433/3



GDC Summer 2024							
ADG	RFI	Rump Fat	Rib Fat	REA	IMF	Scan Weight	REA/CWT
2.87	-.25	.47	.42	13.9	4.20	975	N/A

Genetic Conditions					
PLAG 1	HMG2	ASIP	Polled	DGAT1	SLICK1
QQ	AA	BB	HH	AB	BB

Meat Tenderness		
CAST	Calpain-316	Calpain-4751
CG	GG	TT

Milk Proteins		
BCN AB	BCN A2	KCN
AA	A2A2	AA

Here's your chance to grab a standout daughter of the proven powerhouse Bogota sire, known for producing powerfully built progeny with overwhelming muscle and structural integrity; and the exceptional JDH Lady SAV Manso 733 dam, known for her outstanding maternal traits and quality build. The impressive 654/3 displays a beautiful front 1/3rd and superior udder design, showcasing her ideal blend of femininity and strength. She seamlessly builds her explosive muscle shape and rib with an elite look and quality structure. Take your herd to new heights by injecting her superior balance, body and presence.

MISS J&M GEORGIA 635/3



Sire: MR. KARU MANSO 800



Dam: JDH LADY DEANA MANSO 979/4 ET



(+) JDH DAKOTA MANSO 599
MR. KARU MANSO 800
 JDH LADY REM S. MANSO

JDH MANSO GRANDE 488
 JDH LADY SHANO MANSO

(+) JJ DIDOR CRATA 389
 = JDH MS. REM MANSO 7

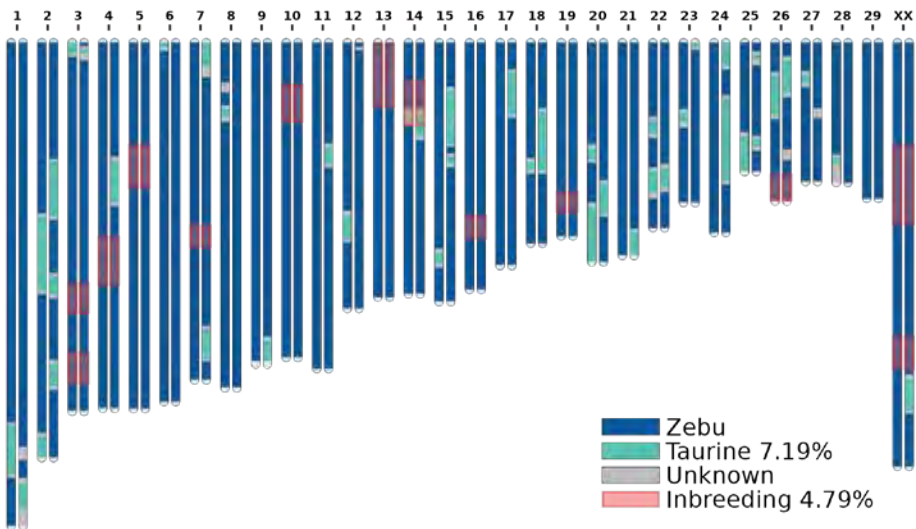
#CARINYA KIRKWOOD

(NCC SUGARWOOD)
 (CARINYA MIAMI)

JDH LADY DEANA MANSO 979/4 ET

JDH MISS RAYMIE MANSO 636/4

+ JDH MR ELMO MANSO
 JDH LADY JACKIE MANSO



GDC Summer 2024

ADG	RFI	Rump Fat	Rib Fat	REA	IMF	Scan Weight	REA/CWT
N/A	N/A	N/A	N/A	N/A	N/A	N/A	N/A

Genetic Conditions

PLAG 1	HMG2	ASIP	Polled	DGAT1	SLICK1
QQ	AA	AB	HH	AA	BB

Meat Tenderness

CAST	Calpain-316	Calpain-4751
CC	GG	TT

Milk Proteins

BCN AB	BCN A2	KCN
AA	A2A2	AA

If you are a breeder looking for a high impact female, here is a big-time brood cow prospect with a bright future. She's built stout and wide at the ground, massive in her rib shape and offers a ton of maternal merit from her shoulders back. This MR. KARU MANSO 800 daughter has all the power and performance that her sire is so well known for. In addition, she effortlessly carries herself with the elegant style and udder quality of the JDH LADY DEANA MANSO cow, who stems from the Carinya Kirkwood sire from Australia over an +Elmo daughter. Use the blend of her impressive performance, body, and elite look and outline to create progeny that will have success.

DOB: 6/27/2023

LOT 7

REG# 1062560

MISS J&M JEANETTE 625/3



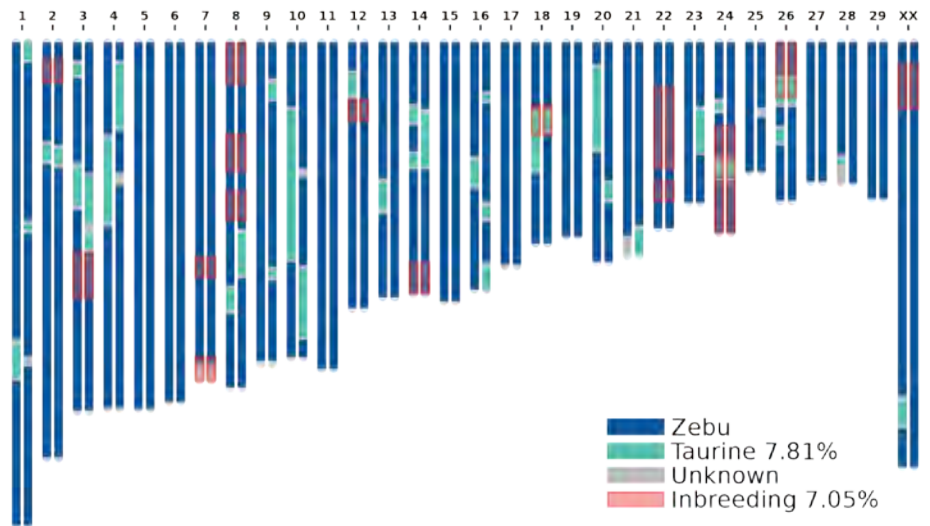
Sire: MR KC UNION MANSO 54/0



Dam: MISS J&M ETTIE 348/9

+ JDH MR. UNION MANSO
 JDH DOMINO MANSO 42 / JDH MADHYO OTHELLO MANSO
MR KC UNION MANSO 54/0
 + JDH MR. UNION MANSO
 + JDH CARMEN ARISTO MANSO / JDH PREMA BAC MANSO

 + JDH MR. MANSO 360/1
 + MR H MADDOX MANSO 684 / + LADY HERITAGE MANSO 173
MISS J&M ETTIE 348/9
 + JDH SIR SHANK MANSO
 J&M LADY H CELINA MANSO 500/3 / MISS J&M BOSTON GINGER



GDC Summer 2024							
ADG	RFI	Rump Fat	Rib Fat	REA	IMF	Scan Weight	REA/CWT
N/A	N/A	N/A	N/A	N/A	N/A	N/A	N/A

Genetic Conditions					
PLAG 1	HMG2	ASIP	Polled	DGAT1	SLICK1
QQ	AA	AB	HH	AA	BB

Meat Tenderness			Milk Proteins		
CAST	Calpain-316	Calpain-4751	BCN AB	BCN A2	KCN
CG	GG	CT	AA	A2A2	AA

Flashy and feminine are two words that describe the sleek fronted, level made 625/3 female. Stemming from the highly productive donor deluxe, ETTIE 348/9, it's not surprise that lot 7 is built with the maternal rib shape, structure, and look of a high-profile female. On top of that, she takes the power and mass of her sire, MR KC UNION MANSO 54/0, and builds it on a stout wide foundation giving her the ability to lay an impressive amount of shape down her top and feed into a massive hip. With her power, pedigree, and phenotype we believe this one has what it takes to make a long-lasting impact on your herd.

HK MS. X-RAY 363/3



Sire: +MR. 3H X-RAY 825



Dam: HK MS. AMERICA 930



ARROW J MILLMARONE 925
+ MR. 3H X-RAY 825

+ MISS 3H 290

HK MS. AMERICA 930

HK MS. X-RAY 787

ARROW J MILLIONAIRE 503

BUDD'S MISS MAYRO 84/3

+ HK MR. AMERICA 435/2

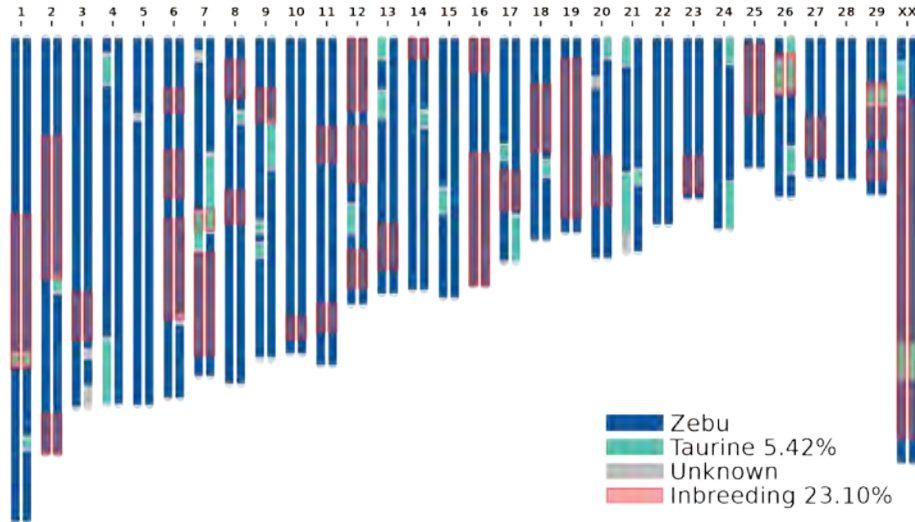
Z-BAR BRAZOS QUEEN 890

HK VISA BRASIL

HK MS. KOJIKI 524

+ MR. 3H X-RAY 825

HK MS. AMERICA 487



GDC Summer 2024

ADG	RFI	Rump Fat	Rib Fat	REA	IMF	Scan Weight	REA/CWT
2.29	-.56	.45	.29	12.1	3.73	1095	1.1

Genetic Conditions

PLAG 1	HMGA2	ASIP	Polled	DGAT1	SLICK1
Qq	AA	BB	HH	AA	BB

Meat Tenderness

CAST	Calpain-316	Calpain-4751
CC	GG	TT

Milk Proteins

BCN AB	BCN A2	KCN
AA	A2A2	AA

If you like them stout, attractive, and flat out good, then don't overlook this high performing +X-Ray 825 daughter. Supplied with all the power and growth of her famous sire, this stout high-capacity female will beef up your herd with durability, shape, and mass. Backed by the dominant HK MS. AMERICA 930, who has time and time again produced prolific animals for the HK herd, 363/3 has the maternal rib and flank of a highly productive female and look and skeletal quality of valuable donor prospect. We believe she has the look, pedigree, and build to create progeny that continues to add value to your operation.

DOB: 6/12/2023

LOT 9

REG# 1064796

HK MS. X-RAY 364/3



Sire: +MR. 3H X-RAY 825



Dam: HK MS. AMERICA 988

ARROW J MILLMARONE 925
+MR. 3H X-RAY 825
 + MISS 3H 290

ARROW J MILLIONAIRE 503
 BUDD'S MISS MAYRO 84/3
 + HK MR. AMERICA 435/2
 Z-BAR BRAZOS QUEEN 890

+ MR WINCHESTER MAGNUM 999
HK MS. AMERICA 988
 MS. 3X RED DYNASTY 3/1

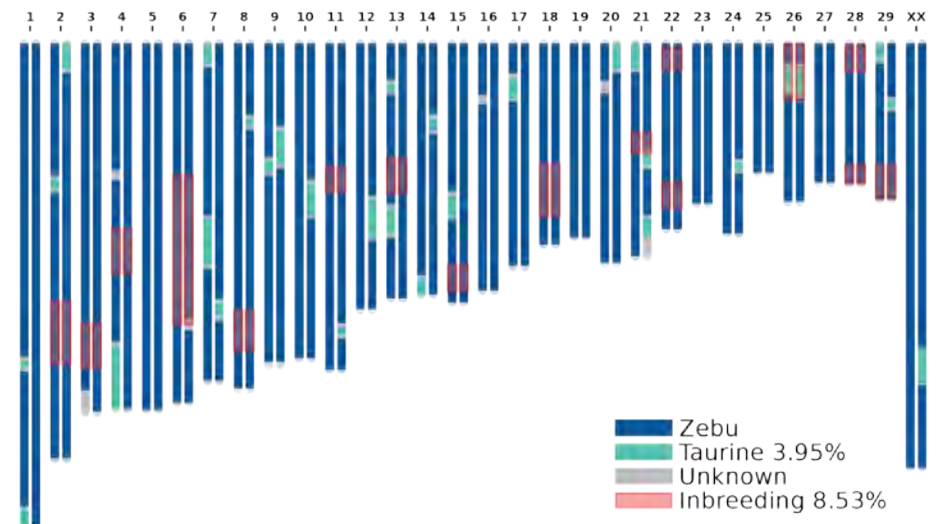
+ HK PASSPORT
 + 5M MISS MAGNUM MOLLY
 MR 3X MILLENIUM 2000
 MISS 3X RED DYNASTY 17

GDC Summer 2024							
ADG	RFI	Rump Fat	Rib Fat	REA	IMF	Scan Weight	REA/CWT
2.93	1.18	.54	.55	13.0	3.76	1205	1.1

Genetic Conditions					
PLAG 1	HMG2	ASIP	Polled	DGAT1	SLICK1
Qq	AA	BB	HH	AA	BB

Meat Tenderness		
CAST	Calpain-316	Calpain-4751
GG	GG	TT

Milk Proteins		
BCN AB	BCN A2	KCN
AA	A2A2	AA



Big, bold and beautiful – just the way we like them! Her broody, big body look radiates with maternal value, and we are obsessed with how she carries her extra mass and demotion so comfortably on a quality structure. With a pedigree designed for success this + X-Ray 825 daughter is equipped with performance and substance to carry her value in any herd. Just like her highly productive dam, HK MS. AMERICA 988, 364/3 is extremely feminine in her muscle pattern and bone and is stamped with a standout phenotype. We believe she is an elite blend of femininity and power to have a successful future as a maternal queen.

HK MS. X-RAY 371/3



Sire: +MR. 3H X-RAY 825



Dam: HK MS. AMERICA 988



ARROW J MILLMARONE 925
+ MR. 3H X-RAY 825

+ MISS 3H 290

+ MR WINCHESTER MAGNUM 999
HK MS. AMERICA 988

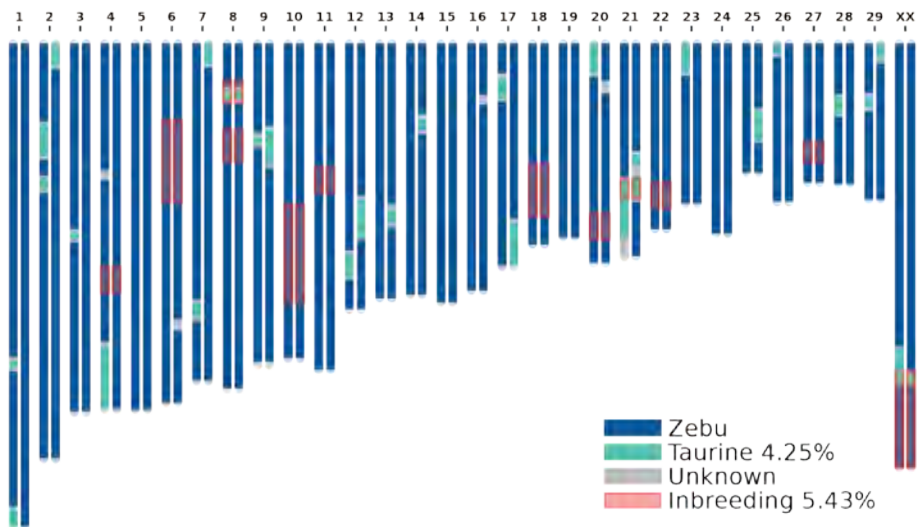
MS. 3X RED DYNASTY 3/1

ARROW J MILLIONAIRE 503
 BUDD'S MISS MAYRO 84/3

+ HK MR. AMERICA 435/2
 Z-BAR BRAZOS QUEEN 890

+ HK PASSPORT
 + 5M MISS MAGNUM MOLLY

MR 3X MILLENIUM 2000
 MISS 3X RED DYNASTY 17



GDC Summer 2024

ADG	RFI	Rump Fat	Rib Fat	REA	IMF	Scan Weight	REA/CWT
2.88	-1.53	.44	.39	11.8	3.13	1230	1.0

Genetic Conditions

PLAG 1	HMGA2	ASIP	Polled	DGAT1	SLICK1
Qq	AA	BB	HH	AA	BB

Meat Tenderness

CAST	Calpain-316	Calpain-4751
CC	GG	TT

Milk Proteins

BCN AB	BCN A2	KCN
AA	A2A2	AA

Backed by an impressive pedigree, this feminine fronted and long-sided female is destined to leave a big impact on your herd. Her flawless conformation and exceptional presence set her apart as a true standout. We love the functionality of 371/3, with her soft rib and sound structure that speaks to the maternal excellence of her dam, HK MS. 988. Her pedigree is further bolstered by the substance and growth passed down from +Mr. 3H X-Ray 825, which gives her endless breeding potential. With this powerful combination of genetics, she possesses the rare balance of femininity, power, and performance. A female built for success and poised to leave a lasting legacy.

DOB: 6/15/2023

LOT 11

REG# 1064801

HK MS. X-RAY 368/3



Sire: +MR. 3H X-RAY 825



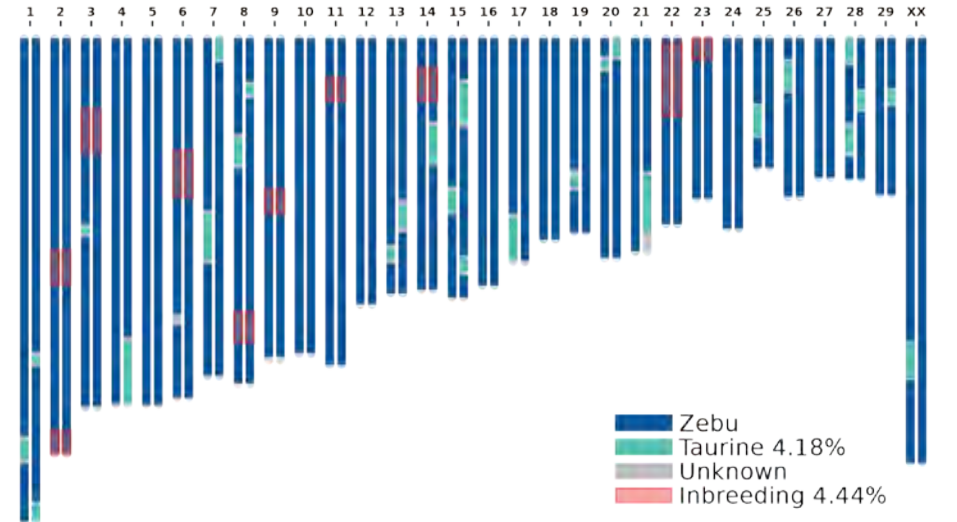
Dam: HK MISS AMERICA 129

ARROW J MILLMARONE 925
+MR. 3H X-RAY 825
+ MISS 3H 290

ARROW J MILLIONAIRE 503
BUDD'S MISS MAYRO 84/3
+ HK MR. AMERICA 435/2
Z-BAR BRAZOS QUEEN 890

SRS MR. STEAMBOAT 774
HK MISS AMERICA 129
BNA MISS NEL MANSO 312/2

+ MR 3X MAXMILLION-AIRE56
SRS MS DEJA VU 630
+ HK PASSPORT
+ 5M MISS MAGNUM MOLLY



GDC Summer 2024							
ADG	RFI	Rump Fat	Rib Fat	REA	IMF	Scan Weight	REA/CWT
2.22	-.57	.70	.66	10.4	2.94	1125	.9

Genetic Conditions					
PLAG 1	HMG2	ASIP	Polled	DGAT1	SLICK1
qq	AA	BB	HH	AA	BB

Meat Tenderness		
CAST	Calpain-316	Calpain-4751
CG	GG	TT

Milk Proteins		
BCN AB	BCN A2	KCN
AA	A2A2	AA

Big time cow prospect! This +Mr. 3H X-Ray 825 daughter out of the 129 cow, has the natural body width, massive rib, and extra muscle shape to power up your calf crop. Yet, she uniquely presents an attractive and maternal phenotype with her attractive front end, soft sweep to her flank, feminine bone, and udder quality. We love all that 368/3 combines and believe she has the potential to take your herd to the next level.

HK MS. X-RAY 375/3



Sire: +MR. 3H X-RAY 825



Dam: HK MS. JACK 73/0 ET



ARROW J MILLMARONE 925
+ MR. 3H X-RAY 825
 + MISS 3H 290

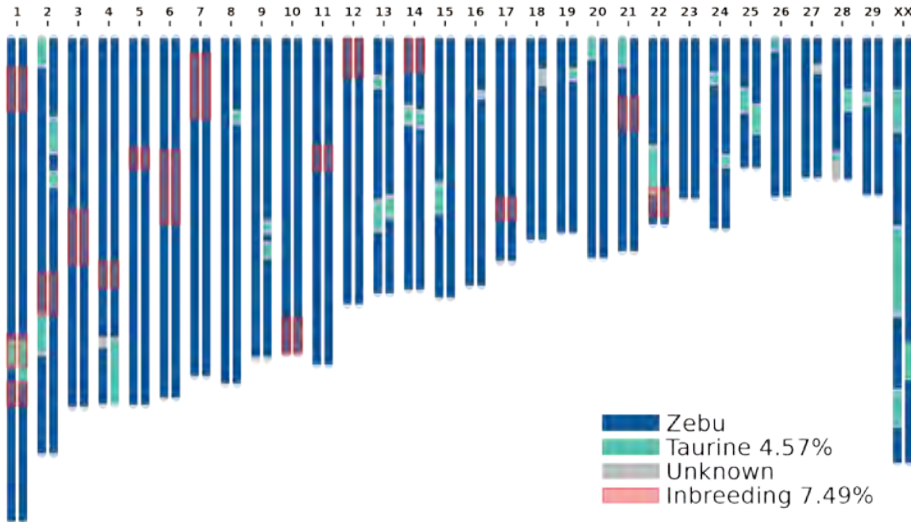
ARROW J MILLIONAIRE 503
 BUDD'S MISS MAYRO 84/3
 + HK MR. AMERICA 435/2
 Z-BAR BRAZOS QUEEN 890

+ MR. SG 111/1

+ SRS MR CAPTAIN RED LEGS
 + MISS V8 210/7

HK MS. JACK 73/0 ET
 HK MS. AMERICA 272

+ TJF MR. SMOKIN GUN
 HK MS. PASSPORT 125/7



GDC Summer 2024							
ADG	RFI	Rump Fat	Rib Fat	REA	IMF	Scan Weight	REA/CWT
2.93	1.73	.63	.40	12.6	2.35	1270	1.0

Genetic Conditions					
PLAG 1	HMGA2	ASIP	Polled	DGAT1	SLICK1
QQ	AA	BB	HH	AA	BB

Meat Tenderness		
CAST	Calpain-316	Calpain-4751
CG	GG	TT

Milk Proteins		
BCN AB	BCN A2	KCN
AA	A2A2	AA

Cow power designed with great breed character. Everyone can appreciate the power in her massive rib, hip and stout bone work, matched with her length of body, extension, and easy moving structure. Plus, her deep red color and level lines highlight her quality look making her a sure sale day favorite. Sired by the renowned +X-Ray bull and out of a +Jack daughter, we believe she has what it takes to generate competitive functional progeny that lasts.

DOB: 6/14/2023

LOT 13

REG# 1064799

HK MS. X-RAY 366/3



Sire: +MR. 3H X-RAY 825



Dam: HK MS. JACK 71/0 ET

ARROW J MILLMARONE 925
+MR. 3H X-RAY 825
 + MISS 3H 290
 + MR. SG 111/1
HK MS. JACK 71/0 ET
 HK MS. AMERICA 272

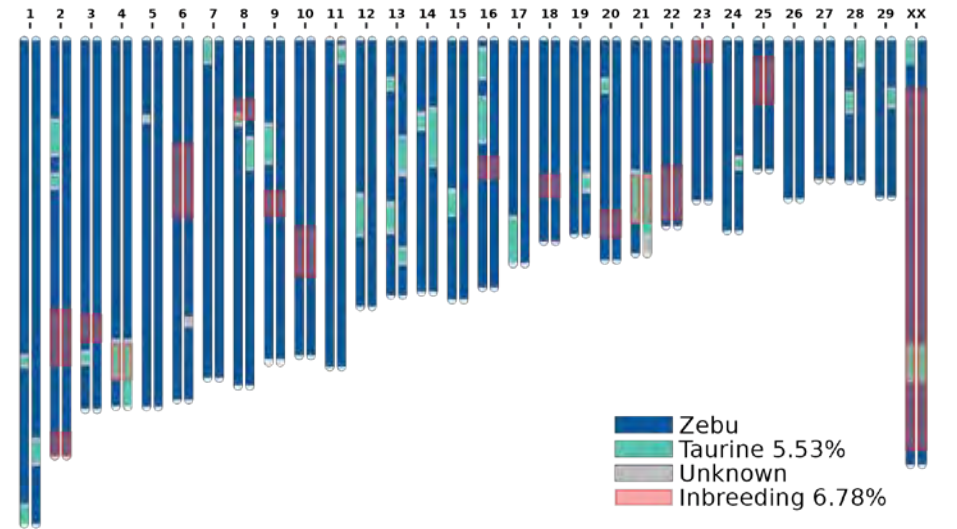
ARROW J MILLIONAIRE 503
 BUDD'S MISS MAYRO 84/3
 + HK MR. AMERICA 435/2
 Z-BAR BRAZOS QUEEN 890
 + SRS MR CAPTAIN RED LEGS
 + MISS V8 210/7
 + TJF MR. SMOKIN GUN
 HK MS. PASSPORT 125/7

GDC Summer 2024							
ADG	RFI	Rump Fat	Rib Fat	REA	IMF	Scan Weight	REA/CWT
3.01	.70	.77	.66	12.5	4.17	1200	1.0

Genetic Conditions					
PLAG 1	HMG2	ASIP	Polled	DGAT1	SLICK1
QQ	AA	BB	HH	AA	BB

Meat Tenderness		
CAST	Calpain-316	Calpain-4751
CC	GG	CT

Milk Proteins		
BCN AB	BCN A2	KCN
AA	A2A2	AA



Cherry red and stemmed from royal genetics, this is your chance to inject breed changing bloodlines into your program. Not only is 366/3 a pedigree standout being sired by the original +X-Ray and out of a beautiful +Jack x +Smokin Gun daughter, we love her maternal look displaying tremendous softness and substance in her rib and flank. 366/3 also moves freely at the ground, maternal in her udder design, and presents a feminine look. Let her phenotype, functionality, and pedigree be the boost your herd is looking for.

HK MS. X-RAY 369/3



Sire: +MR. 3H X-RAY 825



Dam: HK MS. JACK 71/0 ET



ARROW J MILLMARONE 925
+ MR. 3H X-RAY 825

+ MISS 3H 290

+ MR. SG 111/1

HK MS. JACK 71/0 ET

HK MS. AMERICA 272

ARROW J MILLIONAIRE 503
 BUDD'S MISS MAYRO 84/3

+ HK MR. AMERICA 435/2
 Z-BAR BRAZOS QUEEN 890

+ SRS MR CAPTAIN RED LEGS
 + MISS V8 210/7

+ TJF MR. SMOKIN GUN
 HK MS. PASSPORT 125/7



Sister: HK Ms Ray 288/2



Sister: HK Ms Ray 284/2

GDC Summer 2024

ADG	RFI	Rump Fat	Rib Fat	REA	IMF	Scan Weight	REA/CWT
2.93	-.80	.63	.42	11.3	3.87	1055	1.0

Genetic Conditions

PLAG 1	HMGA2	ASIP	Polled	DGAT1	SLICK1
N/A	N/A	N/A	N/A	N/A	N/A

Meat Tenderness

CAST	Calpain-316	Calpain-4751
N/A	N/A	N/A

Milk Proteins

BCN AB	BCN A2	KCN
N/A	N/A	N/A

Maternal beauty packed with substance and stands on quality. We love how this cherry heifer is designed with the power and substance of her globally respected sire, +X-Ray 825, yet blends it perfectly with the soft and feminine look of her highly productive dam, who is a +Jack by +Smokin Gun daughter. Her moderate frame, massive rib and sound structure give her the "easy keeping" label that's built for longevity. Use her functionality and quality to produce valuable offspring for many generations.

DOB: 9/1/2023

LOT 15

REG# 1064850

HK MS. ARQUITECTO 386/3



Sire: 3X-HK ARQUITECTO



Dam: HK MS. JACK 71/0 ET

3X-HK ARQUITECTO

MS. 3X RED DYNASTY 1/4

HK BLUEPRINT

HK MS. JACK 71/0 ET

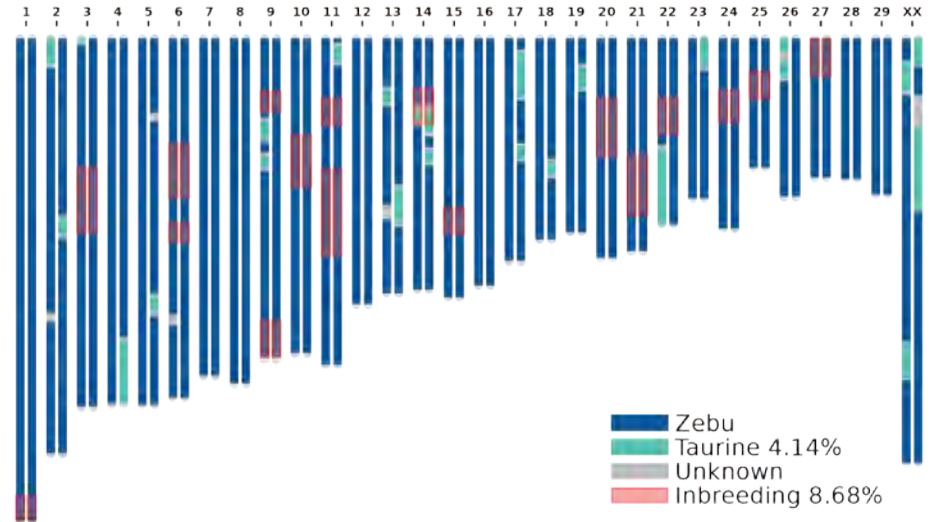
HK MS. AMERICA 272

HK BLUE BLOOD 986
HK MILLIONAIRIS 359/2

MR 3X MILLENIUM 2000
MISS 3X MILLENIUM 50

+ SRS MR CAPTAIN RED LEGS
+ MISS V8 210/7

+ TJF MR. SMOKIN GUN
HK MS. PASSPORT 125/7



GDC Summer 2024

ADG	RFI	Rump Fat	Rib Fat	REA	IMF	Scan Weight	REA/CWT
2.67	-1.09	.50	.22	10.4	3.97	920	1.0

Genetic Conditions

PLAG 1	HMG2	ASIP	Polled	DGAT1	SLICK1
QQ	AA	BB	HH	AB	BB

Meat Tenderness

CAST	Calpain-316	Calpain-4751
CG	GG	TT

Milk Proteins

BCN AB	BCN A2	KCN
AA	A2A2	AA

Built like a lady with style and grace, 386/3 is a fancy fronted Arquitecto daughter who has the perfect balance of femininity, rib shape, and structural correctness to make a highly productive donor prospect. Her quality look and build matched with her maternal rib shape and substance give her the tools to generate high valued functional female with an elite presence.

HK MS. ARQUITECTO 389/3



Sire: 3X-HK ARQUITECTO



Dam: HK MS. JACK 71/0 ET



HK BLUEPRINT

3X-HK ARQUITECTO

MS. 3X RED DYNASTY 1/4

+ MR. SG 111/1

HK MS. JACK 71/0 ET

HK MS. AMERICA 272

HK BLUE BLOOD 986

HK MILLIONAIRIS 359/2

MR 3X MILLENIUM 2000

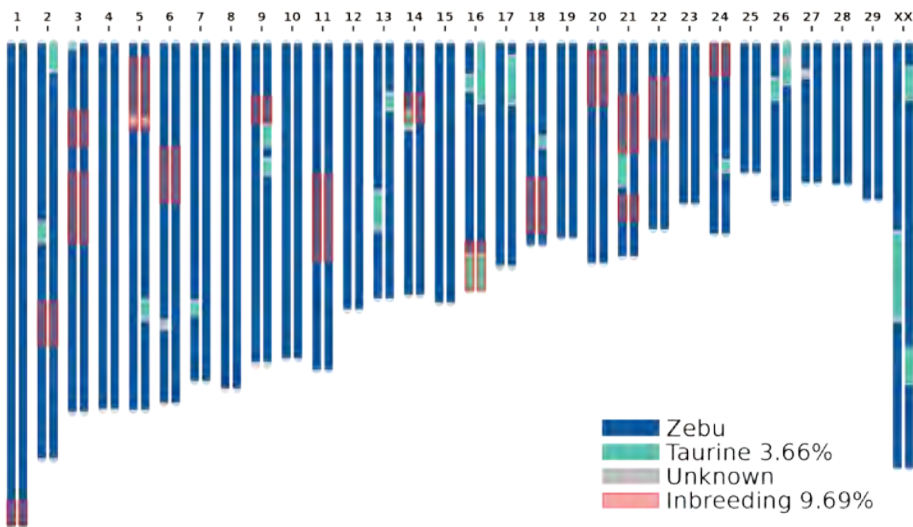
MISS 3X MILLENIUM 50

+ SRS MR CAPTAIN RED LEGS

+ MISS V8 210/7

+ TJF MR. SMOKIN GUN

HK MS. PASSPORT 125/7



GDC Summer 2024

ADG	RFI	Rump Fat	Rib Fat	REA	IMF	Scan Weight	REA/CWT
3.21	.29	.50	.23	9.7	2.89	1000	1.0

Genetic Conditions

PLAG 1	HMG2	ASIP	Polled	DGAT1	SLICK1
QQ	AA	BB	HH	AB	BB

Meat Tenderness

CAST	Calpain-316	Calpain-4751
CG	GG	TT

Milk Proteins

BCN AB	BCN A2	KCN
AA	A2A2	AA

Built with strength and style, this cherry red heifer offers the perfect blend of muscle and femininity. Like her sire, Arquitecto, 389/3's built powerfully from the ground up and displays a ton of expression and substance from her shoulder back. She's a sleek fronted, smooth shoulder heifer who is extremely maternal in her rib and udder design, while showcasing a level topline and attractive hip and hind leg. Here's your opportunity to claim a female who will beef up your herd while keeping them lady like.

SIRE + DAM *reference*

HK GLOBAL PASSPORT 848

LOTS 1 & 2



HK MAGNATE

LOT 3



HK MR. AMERICA 280

LOT 4



MR. H BOGOTA MANSO 253/1

LOT 5



MR. KARU MANSO 800

LOT 6



MR KC UNION MANSO 54/0

LOT 7



+MR. 3H X-RAY 825

LOTS 8-14



3X-HK Arquitecto

LOTS 15 & 16



HK MS. JACK AMERICA 114/0

LOT 1



HK MS. AMERICA JACK 944

LOT 2



JDH LADY SAV MANSO 733/0

LOT 5



JDH LADY DEANA MANSO 979/4 ET

LOT 6



MISS J&M ETTIE 348/9

LOT 7



HK MS. AMERICA 930

LOT 8



HK MS. AMERICA 988

LOTS 9 & 10



HK MISS AMERICA 129

LOT 11



HK MS. JACK 73/0 ET

LOT 12



HK MS. JACK 71/0 ET

LOTS 13-16



Semen

OFFERINGS

- Semen lots are purchased in **unit increments**. Purchase price of semen lot will be **price of the lot selling times the number consigned**.
- AI Certificates are **not** included.
- Once semen lots are **paid in full**, STgenetics Brahman or HK Cattle will *release semen into the buyer's name*.
- **Buyer** will be *responsible* for all shipping and/or insurance cost of semen.
- **Storage** at STgenetics is *offered* if buyer would prefer to store semen *after* payment is received. **Buyer** is **responsible** for letting sale clerk know **at the time of payment**.

+ TJF MR. SMOKIN GUN

DOB: 1/24/2007
REG# 862276

+ HK PASSPORT

MR. 3X RED DYNASTY 75

HK MILLIONAIRIS 359/2

+ MR WINCHESTER MAGNUM 999

+ HK MR. AMERICA 435/2

+ 5M MISS MAGNUM MOLLY

+ MISS V8 423/4

Lot 17

1 conventional unit

+ MS JR RED LOTTO

JJ WEST DIDOR 435

+ MR. T.D. WEST 270

JJ MS CUATRO DIDOR 765

+ KR MS AMERICA

+ TTT MR. TEXAS LOTTO 670

MISS CIRCLE A 921

As tradition has gone, we try and only offer +Smokin Gun a few times in the year in our online sales. This year being no different, we are now going to offer two lots of one unit each! +SMOKIN GUN needs no introduction to the Red Brahman Breed. An elite sire that has continued to put together impressive progeny globally, Smokin Gun is continues to make his legacy. His females are known for having a great deal of middle, muscle, and great tops, packaged together with a super feminine profile. Smokin Gun's sons are powerful, big boned, and heavy muscled. He is one of the most sought out Red Brahmans bulls today and here is your opportunity to incorporate him into your herd! **We are offering only one lot of one unit; AI certificates are sold separately.**



Daughter: HK MS. AMERICA 268



Daughter: HK MS. AMERICA 272



+ MR. SG 111/1

DOB: 10/4/2011
REG# 905592

+ HK PASSPORT

MR. 3X RED DYNASTY 75

HK MILLIONAIRIS 359/2

+ MR WINCHESTER MAGNUM 999

+ 5M MISS MAGNUM MOLLY

+ HK MR. AMERICA 435/2

+ MISS V8 423/4

Lot 18

2 Sexed Female units

+ MS JR RED LOTTO

JJ WEST DIDOR 435

+ MR. T.D. WEST 270

JJ MS CUATRO DIDOR 765

+ KR MS AMERICA

+ TTT MR. TEXAS LOTTO 670

MISS CIRCLE A 921

Daughter: HK MS. AMERICA JACK 941



Daughter: HK MS. JACK 71/0 ET

+Mr. SG 111/1 "Jack" was the 2014 International and National Champion Red Bull and ABBA Show Bull of the Year, Jack was also named a Register of Renown with his first calf crop. His progeny have been known to have a great deal of body, femininity in the females, and great color and overall superiority. With the popularity and progeny our expectations, we will be offering **one lot of two units of SexedULTRA 4M Female Units, AI Certificates are sold separately.**

+ HK PASSPORT

DOB: 4/20/1994
REG# 724323

+ SOPHISTICATEDMILLIONAIR

MR. 3X RED DYNASTY 75

MISS 3X GAUCHO 75

+ HK MR. AMERICA 61/9

3X SOPHISTICATED LADY

CHEROKEE NEGRO GAUCHO

MISS 3X AA OPTEB

+ HK MR. AMERICA 61/9

HK MILLIONAIRIS 359/2

HK MISS AMERICA 246/1

+ HK TORGSON 426/4

MISS HK RIO 49/0

MR. 3X MUCHO 22

MS CHEROK ARAUTO 1/415

Lot 19

2 conventional units



Son: Mr Winchester Magnum 999



Daughter: HK MS. PASSPORT 125/7

+HK Passport 777 was born in the spring of 1994 yet continues to be one of the most relevant and dominate Red Brahman breeding bulls in 2024. Passport is the sire of the infamous +Winchester Magnum 999/3, whose offspring around the world have led Red Brahman herds since his first calf was born and he himself has produced famous bulls and females. Passport was line bred with +HK Millionaire 61/9. With a small quantity of semen remaining on Passport, take the opportunity to send your Red Brahman breed soaring with prominence. This is our opportunity to go back to the foundation bull that can now be used again on the myriads of exceptional Red Brahman cattle that have produced different pedigrees. Beef, bone, gentle, genuine, red pedigree, and performance-oriented genetics that are to be expected in this famous bull's offspring. We are offering **one lot with two conventional units, AI certificates are sold separately.**



+ MR H MADDOX MANSO 684

DOB: 11/3/2003
REG# 837246

(+) JDH MADISON DE MANSO

(+) MR. V8 202/3

+ JDH LADY REM J MANSO 2

+ JDH MR. MANSO 360/1

(+) MR. V8 777/2

= JDH LADY MANSO 30/9 F

JDH ESTA MANSO

Lot 20

2 conventional units

JDH DOMINO MANSO 42

+ JDH MR. UNION MANSO

JDH MADHYO OTHELLO MANSO

+ LADY HERITAGE MANSO 173

JDH SIR CHAPARRAL MANSO

JDH LADY MEG MANSO

JDH MS CECIL MANSO

Daughter: MISS J&M SEXADA 790/5



Daughter : MISS J&M SEXADA 255/2



+ MR H MADDOX MANSO 684 has been a popular and proven sire across the globe now for nearly 20 years. Countless champion daughters and sons in the showring, Maddox is one sire that continues to produce champions time and time again. Known for injecting muscle, bone, rib shape, and overall style to his progeny, Maddox continues to leave his legacy today. Here is the opportunity to purchase Maddox semen that we are no longer offering to the public! **One lot of two conventional units, AI Certificates are sold separately.**

Terms & conditions

The following sale terms and conditions apply for the
2025 7th Annual Spring Production Sale consignments
from STgenetics Brahman and HK Cattle:

TERMS OF SALE

All cattle and frozen genetics are to be settled with by check, credit card or cash, PRIOR to load out or pick up of frozen genetics, unless payment arrangements have been PRE-APPROVED by sale management in writing. Cattle and/or genetics will not be released from sale premises until payment is received in full. All sales are done under the terms and conditions set forth at www.stgen.com, unless superseded by a sale, license, lease, or other written agreement between the parties that is applicable to this transaction, in which case the terms and conditions are determined according to such written agreement. All transactions are due within 30 days after the end of the sale.

BREEDING INTEREST

STgenetics Brahman and HK Cattle reserve the right to breeding interest on all lots sold in the 2025 7th Annual Spring Production Sale. Any embryos made on the females prior to being sold by either STgenetics Brahman or HK Cattle, will be granted rights to register the progeny. STgenetics Brahman and HK Cattle also retain the right to at least two successful IVF flushes on females offered.

CATTLE VIEWING

The sale offering will be on display at STgenetics in Navasota, Texas two weeks prior to the sale dates. STgenetics welcomes any visitor to see the cattle by appointment only through sale managers.

NOTE

Products, cattle, or frozen genetics, if exported, are exported from the United States in accordance with the Export Administration Regulations. Diversion is contrary to U.S. law. Cattle sold for export to foreign countries must, by state law, be officially tested for the disease required by that country after the sale is made at the expense of purchaser. Bulls offered in the sale have all passed fertility examinations done by a licensed veterinary. **Cattle are sold "AS IS" without any warranties or guarantees.**

BIDDING

Each sale offering will be sold to the highest bidder without reserve. The sale manager will settle any disputes to bids and his or her decision on such matters shall be final. Our 2025 7th Annual Spring Production Sale will be broadcasted on bestcattlesales.com. Bids will be handled in confidence with satisfaction guaranteed.





SIGHT-UNSEEN PURCHASES

STgenetics Brahman and HK Cattle are not responsible for cattle purchased sight-unseen. **Purchaser will take responsibility of the cattle "AS IS" without any warranties or guarantees once payment is received.** If you are unable to view sale offerings and would like additional information, please contact sale management.

IDENTIFICATION

Seller offers each animal with a holding brand and individual private herd number. Buyer is responsible to check brands for accuracy.

CERTIFICATE OF REGISTRY

A transfer of ownership will be furnished to purchaser for each registered animal once proper settlement has been made. Please provide full name, address and association membership account number when making payment to insure properly transferred ownership.

HEALTH INFORMATION

All animals sold are eligible for United States interstate shipment except as otherwise noted. Cattle have been tested for exportation, with guarantees holding up to 60 days those cattle do qualify for exportation from the United States. **Cattle are sold "AS IS" without any warranties or guarantees, including no guarantees on health required testing for international exportation.**

CATTLE LOADOUT

The buyer is responsible for coordination of all shipping and transportation arrangements at their cost. Cattle can be loaded out after the payment has been received. STgenetics Brahman and HK Cattle **will offer a 60-day grace period once the sale has ended on March 9, 2025, for the cattle to be picked up with no charge. Starting May 8, 2025, if cattle have not been picked up from STgenetics, board charges to hold cattle at the facility will take effect at buyer's cost.** Boarding charges are \$10/day at buyer's expense. Buyer does have the option to leave cattle to have Embryo Transfer or In Vitro Fertilization at STgenetics with that 60-day grace period of no charge for board, but ET and IVF work will be done at buyer's expense. If cattle are to stay for the 60-day grace period, health testing can be redone at buyer's expense.

Please feel free to reach out to us if you have any additional questions:

Adelyn Allen
979.229.6943

Eddy Valenzuela
979.229.8034

Dinah Weil
713.204.0995

Se habla español

VII *Spring* ANNUAL PRODUCTION SALE & CATTLEMAN'S STRATEGY

SUNDAY, MARCH 9TH 2025

11:00 AM

CATTLEMAN'S STRATEGY

A field day dedicated to cattlemen interested in genomics, feed efficiency, cattle evaluation, and ways to strategically plan your future calf crops

4:00 PM

PRODUCTION SALE

Our seventh annual spring production sale and party, join us for dinner, drinks and camaraderie with international guests and brahman enthusiasts



22909 FARM TO MARKET RD 2154, NAVASOTA, TX 77868

SALE HOSTED ONLINE AT **BESTCATTLESALES.COM**

STgenetics[®]
Brahman

AND

HK
CATTLE

Adelyn Allen
adelyn.allen@STgen.com
979.229.6943

Eddy Valenzuela*
eddy.valenzuela@STgen.com
979.229.8034

Gustavo Toro*
gustavo.toro@stgen.com
832.331.6680

Dinah Weil*
dinahk@sprynet.com
713.204.0995

*se habla español**